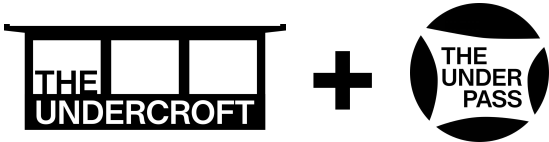
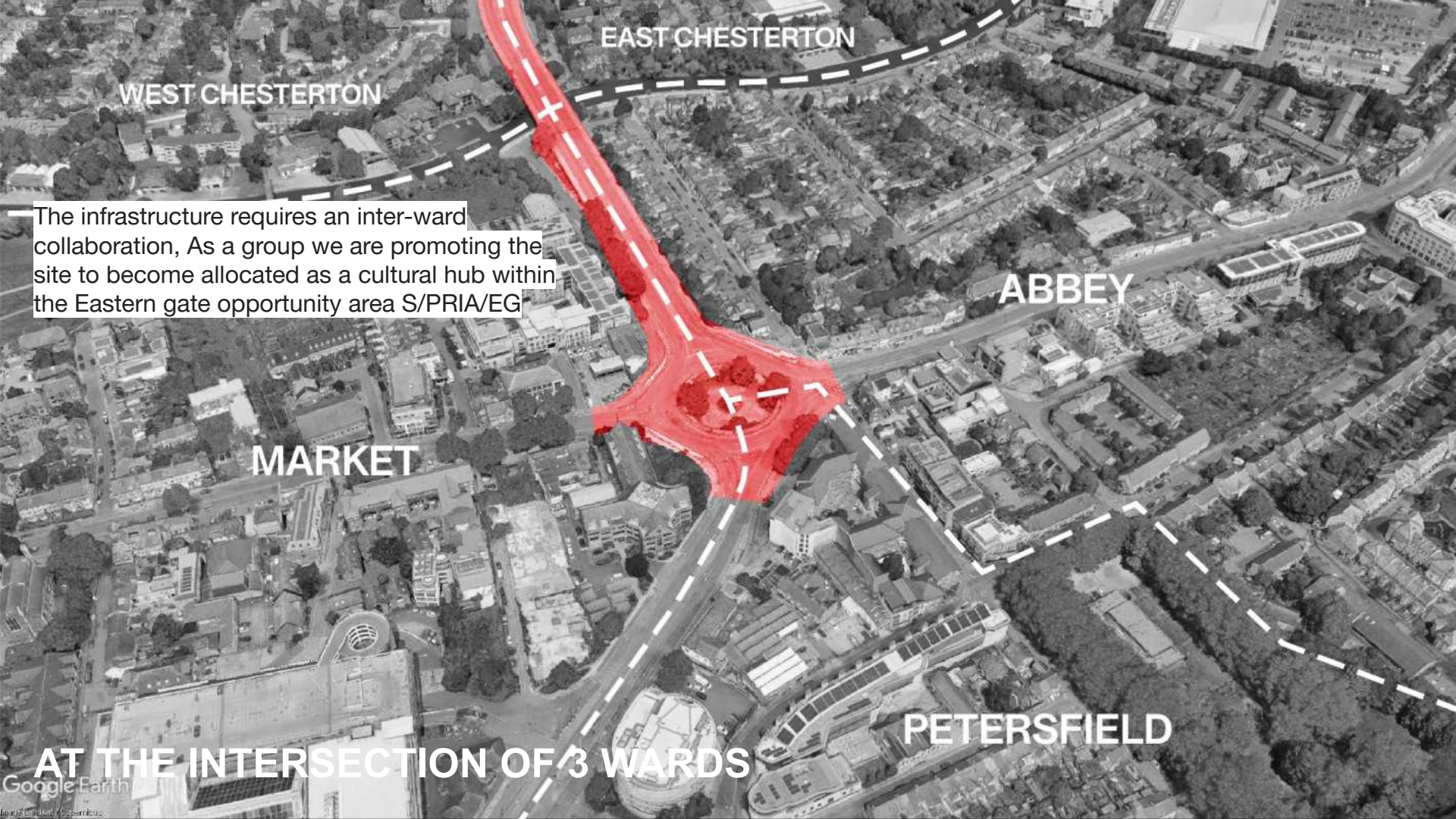


**THE ELIZABETH BRIDGE
UNDERCROFTS & UNDERPASS PROJECT
PROMOTION AS A CULTURAL HUB
(YOUTH/ARTS)**





EAST CHESTERTON

WEST CHESTERTON

The infrastructure requires an inter-ward collaboration, As a group we are promoting the site to become allocated as a cultural hub within the Eastern gate opportunity area S/PRIA/EG

ABBEEY

MARKET

PETERSFIELD

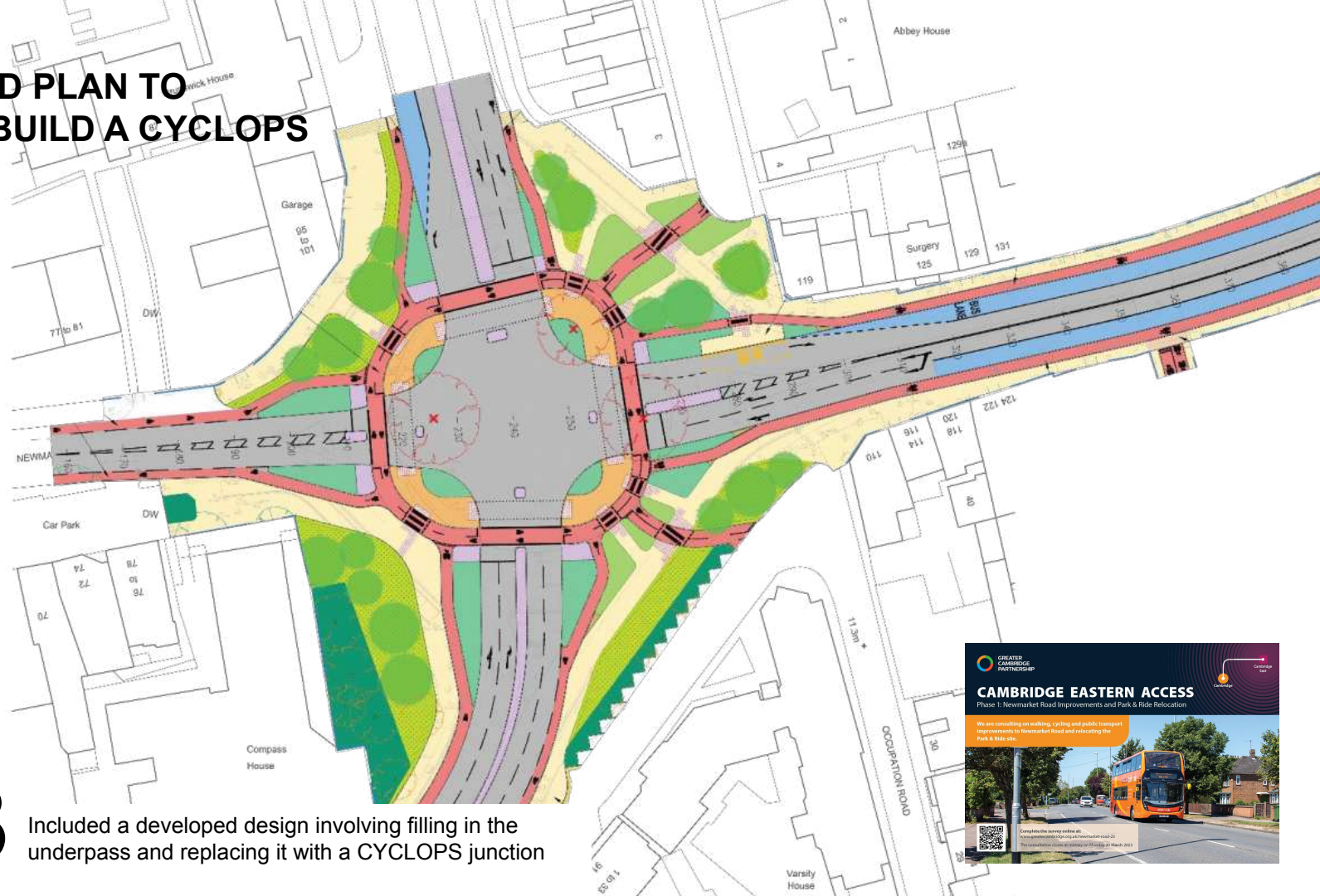
AT THE INTERSECTION OF 3 WARDS

SCALE COMPARISON



BFI IMAX, London

CURRENT: ENGINEER-LED PLAN TO DEMOLISH & BUILD A CYCLOPS JUNCTION

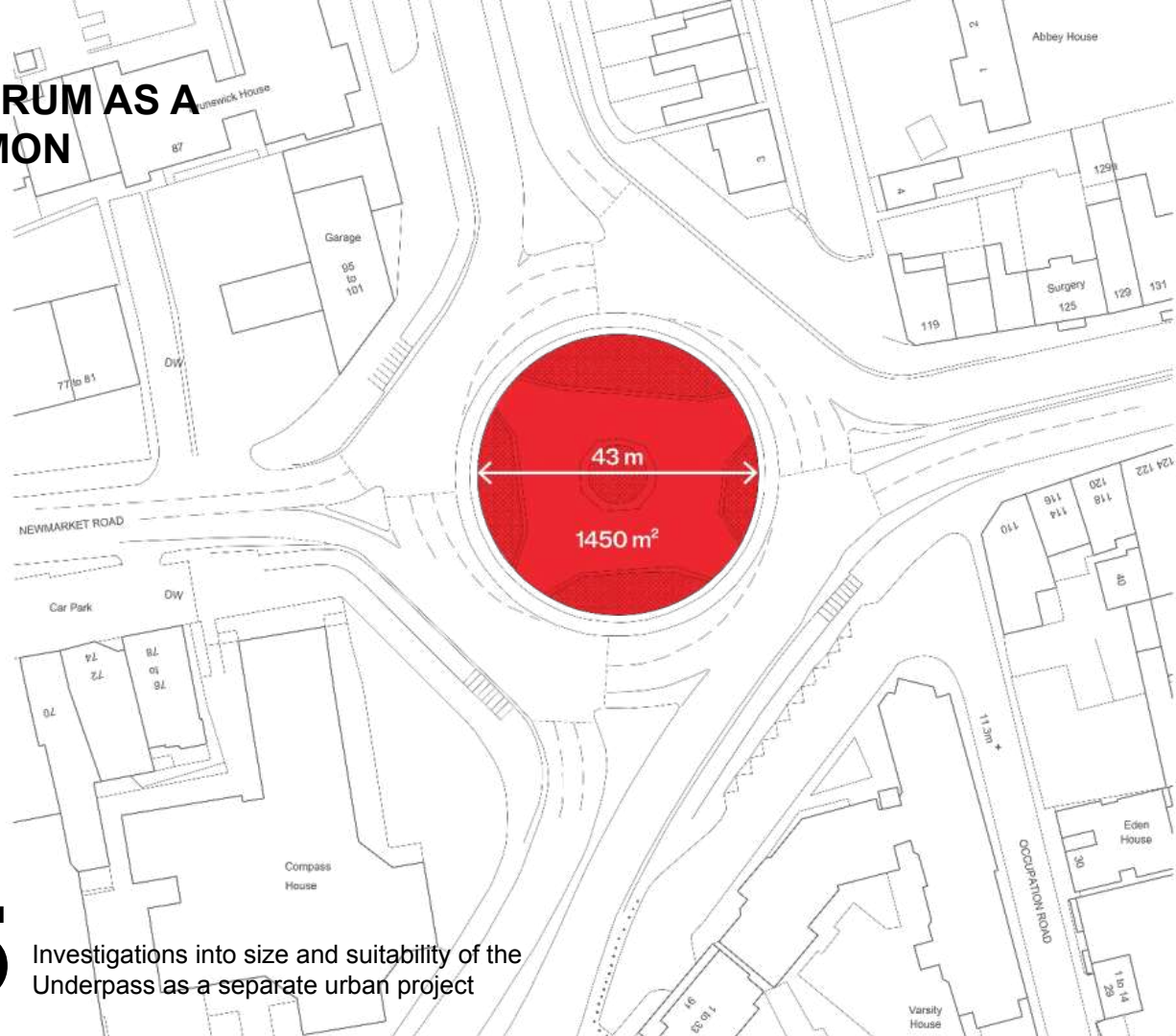


2023

Included a developed design involving filling in the underpass and replacing it with a CYCLOPS junction



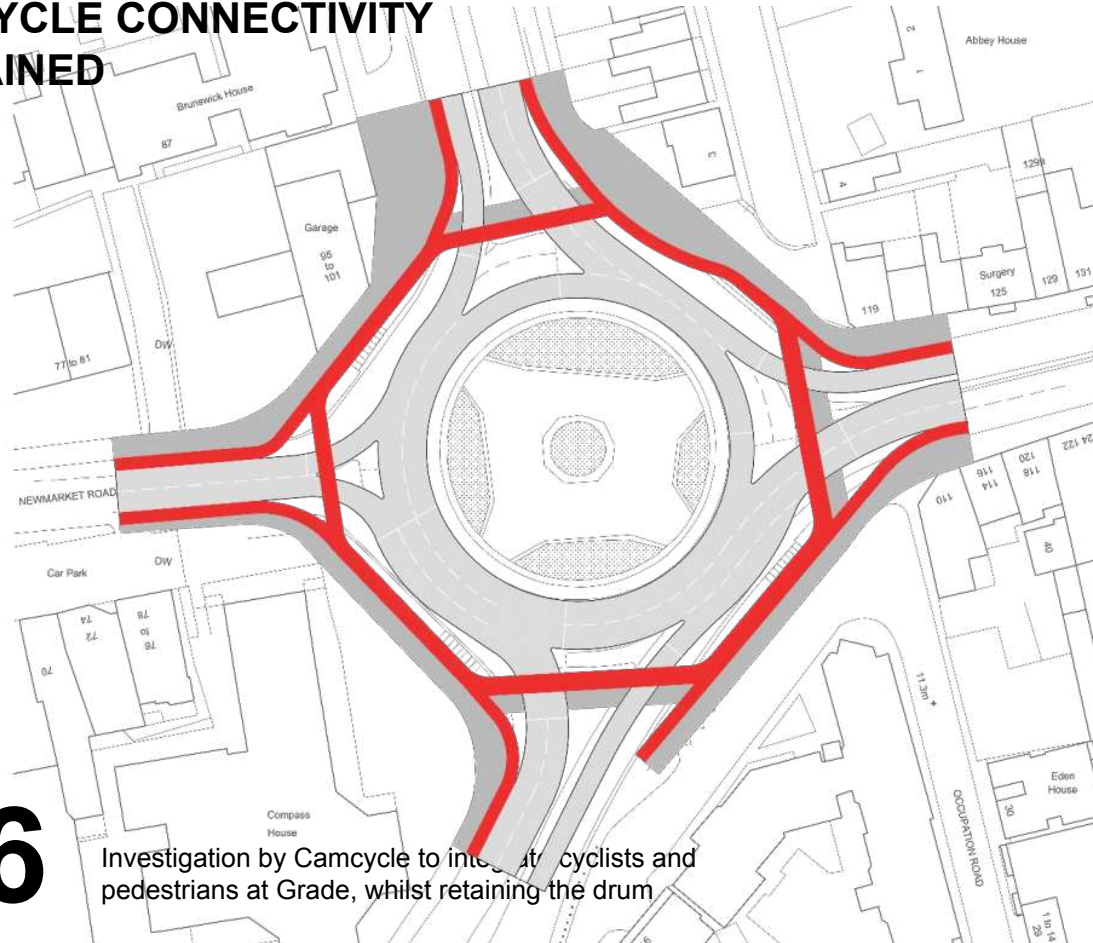
**PROPOSED:
RETAIN THE DRUM AS A
PUBLIC COMMON**



2025

Investigations into size and suitability of the Underpass as a separate urban project

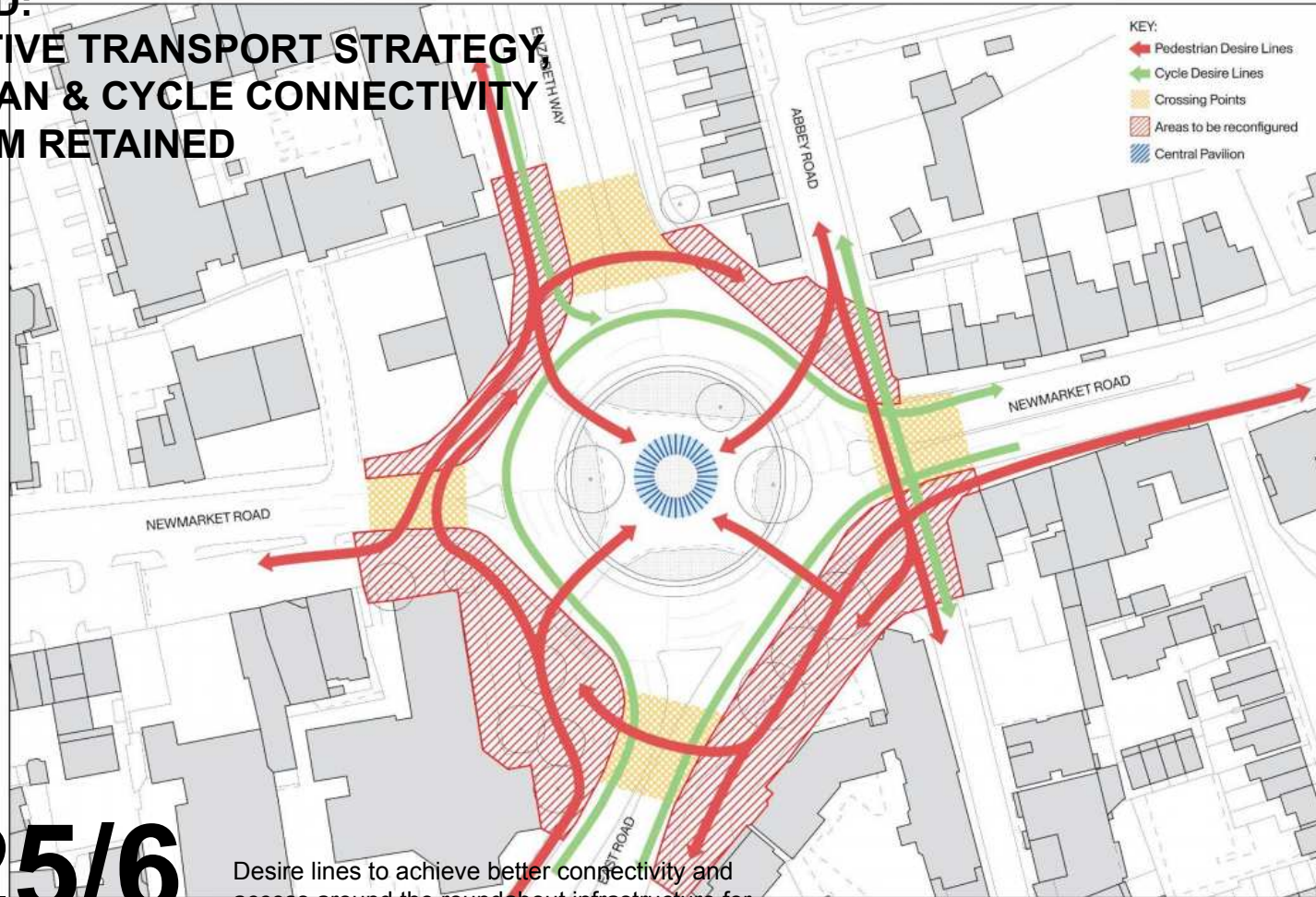
**PROPOSED:
ALTERNATIVE TRANSPORT STRATEGY,
PEDESTRIAN & CYCLE CONNECTIVITY
WITH DRUM RETAINED**



2025/6

Investigation by Camcycle to improve connectivity for cyclists and pedestrians at Grade, whilst retaining the drum

PROPOSED: ALTERNATIVE TRANSPORT STRATEGY PEDESTRIAN & CYCLE CONNECTIVITY WITH DRUM RETAINED



2025/6

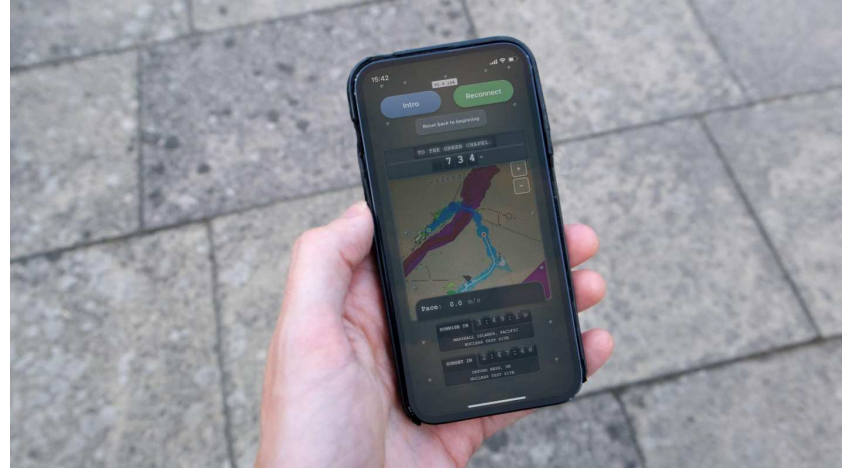
Desire lines to achieve better connectivity and access around the roundabout infrastructure for cyclists and pedestrians

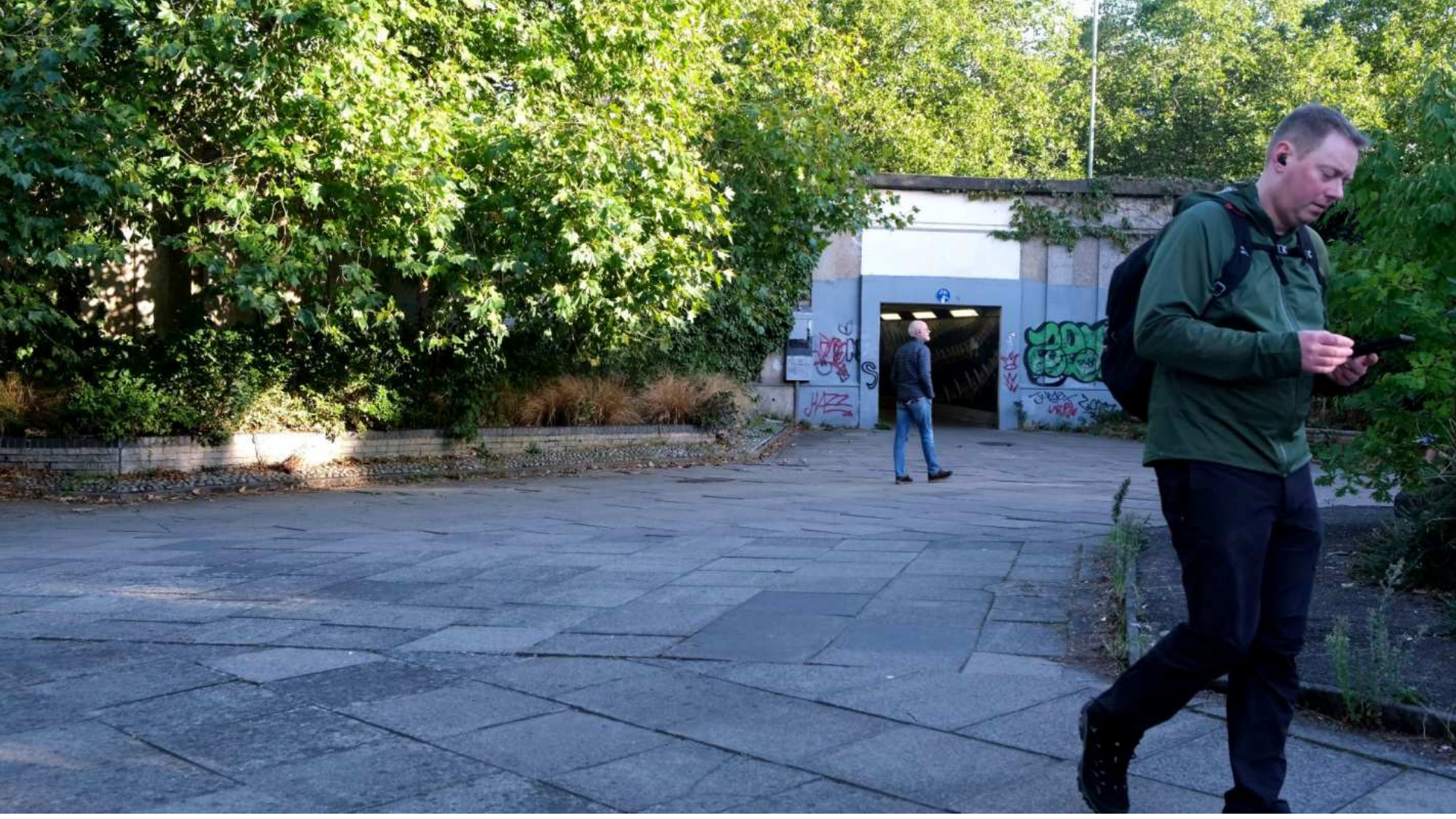
Elizabeth Way / East Road Roundabout Desire Lines Diagram

NEUBAU





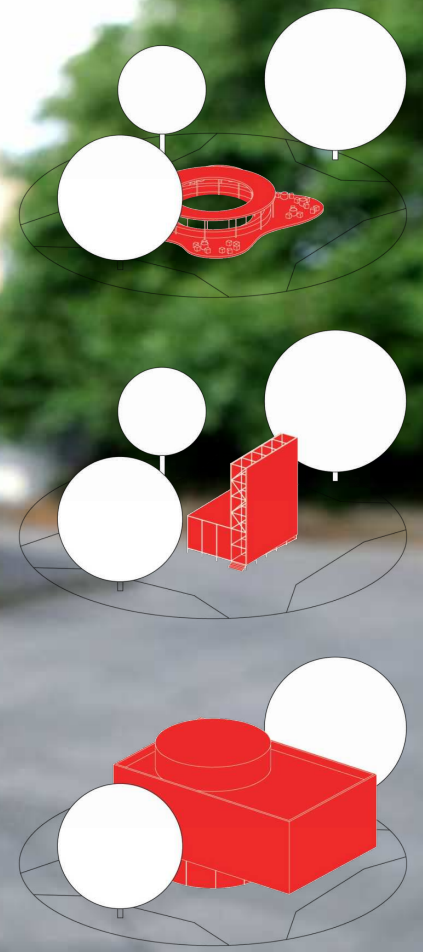
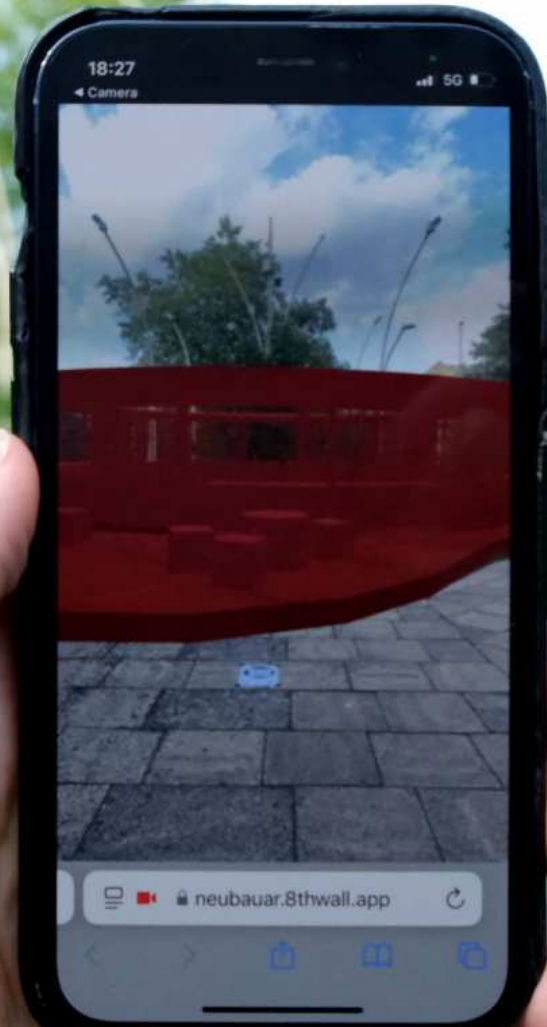








THE OTHER PAGES



VI AKES YOU

WAY TO SIMILAR
YOU WERE FULL OF







IMAGINARIUM











DEGREE
SHOW



Raschkebergstraße



DO YOU
WANT TO
COME TO
RADKE
FRIDAY
DINNERTAG 11.12.
19:00









there



2013
24

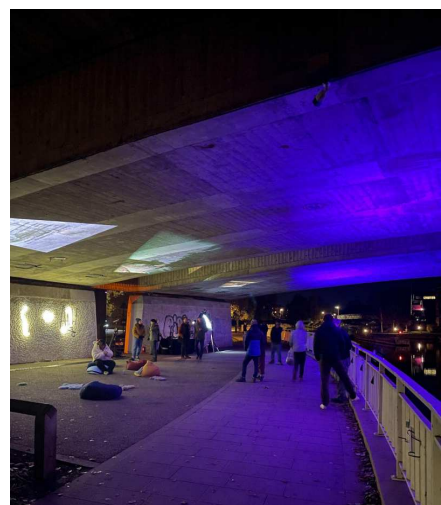
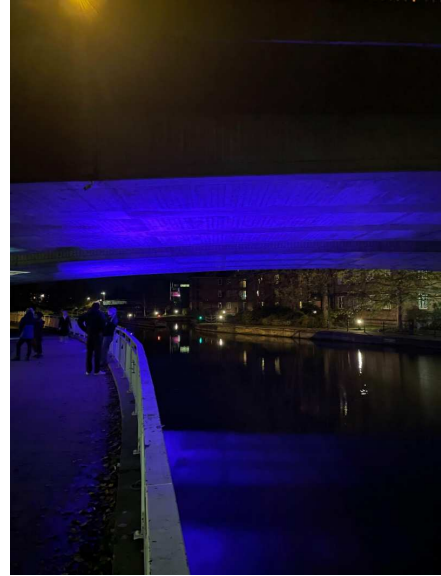
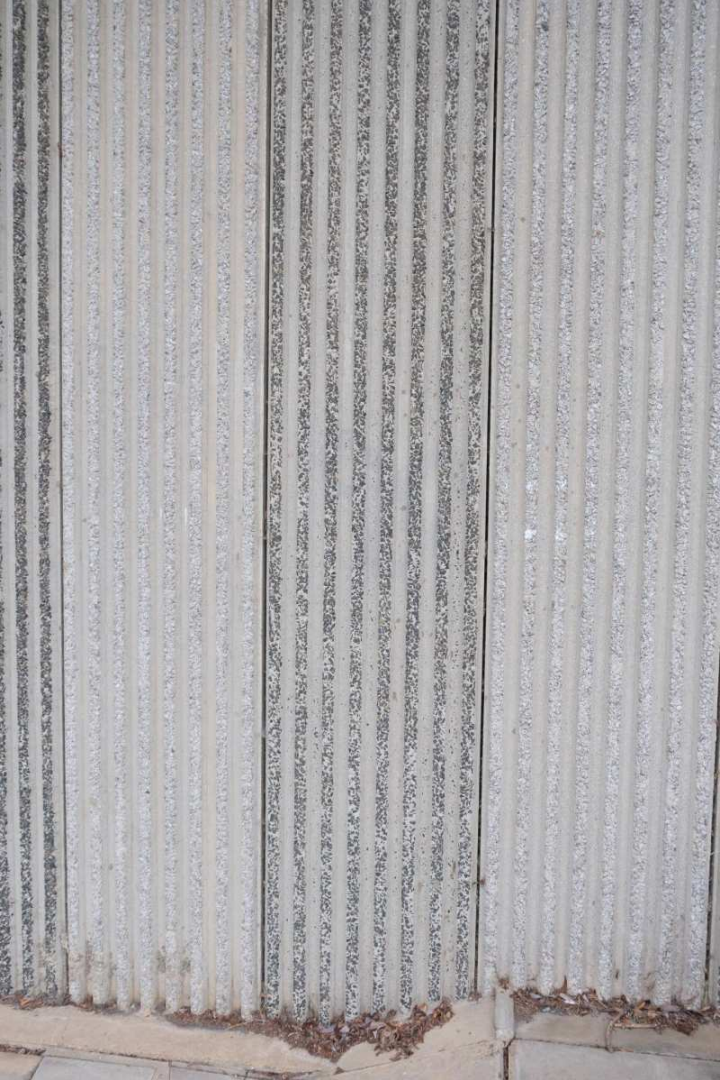




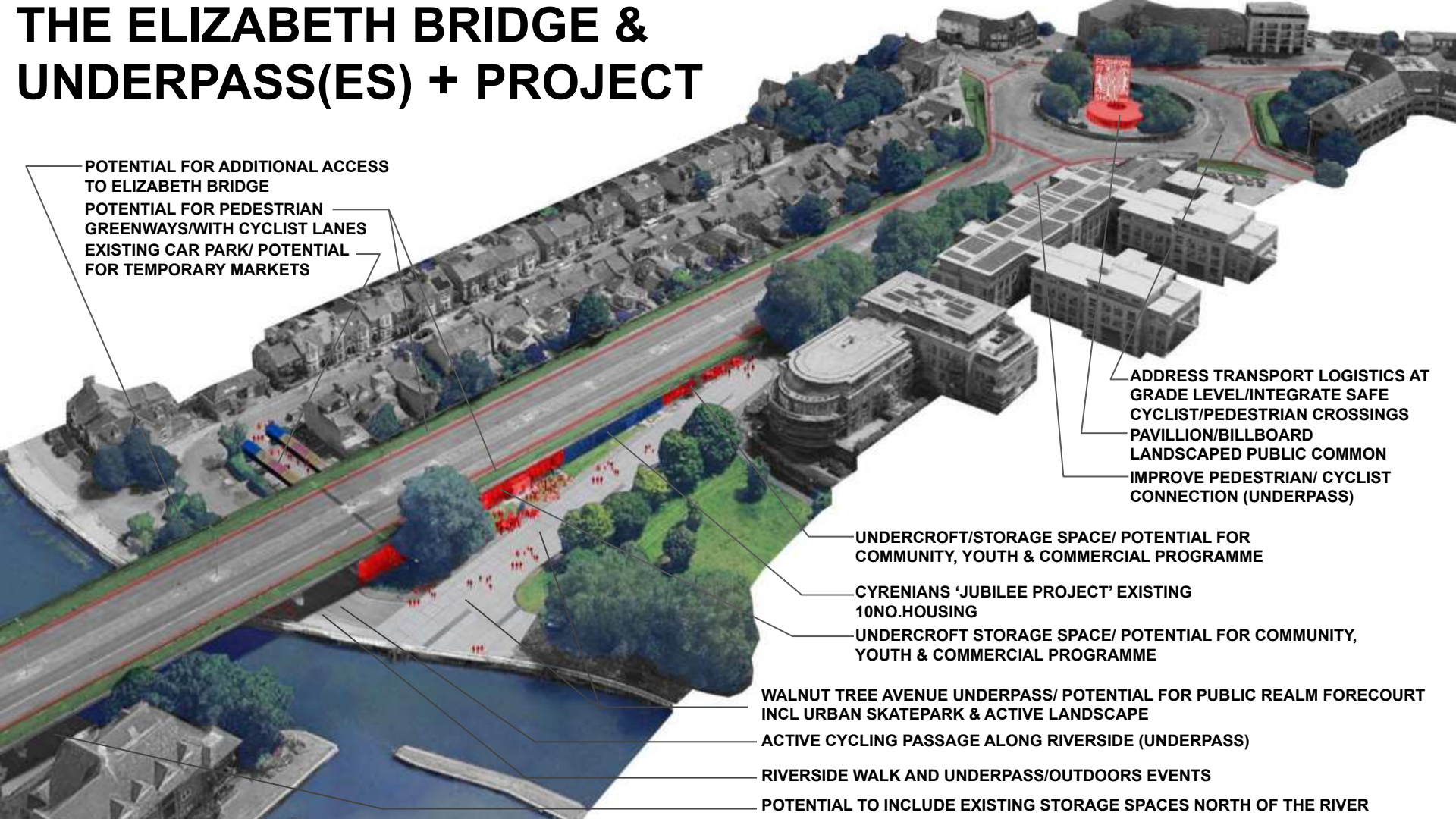
Venice Biennale, Arsenale



A2



THE ELIZABETH BRIDGE & UNDERPASS(ES) + PROJECT



POTENTIAL FOR ADDITIONAL ACCESS TO ELIZABETH BRIDGE
POTENTIAL FOR PEDESTRIAN GREENWAYS/WITH CYCLIST LANES
EXISTING CAR PARK/ POTENTIAL FOR TEMPORARY MARKETS

ADDRESS TRANSPORT LOGISTICS AT GRADE LEVEL/INTEGRATE SAFE CYCLIST/PEDESTRIAN CROSSINGS
PAVILLION/BILLBOARD
LANDSCAPED PUBLIC COMMON
IMPROVE PEDESTRIAN/ CYCLIST CONNECTION (UNDERPASS)

UNDERCROFT/STORAGE SPACE/ POTENTIAL FOR COMMUNITY, YOUTH & COMMERCIAL PROGRAMME

CYRENIANS 'JUBILEE PROJECT' EXISTING 10NO.HOUSING

UNDERCROFT STORAGE SPACE/ POTENTIAL FOR COMMUNITY, YOUTH & COMMERCIAL PROGRAMME

WALNUT TREE AVENUE UNDERPASS/ POTENTIAL FOR PUBLIC REALM FORECOURT INCL URBAN SKATEPARK & ACTIVE LANDSCAPE

ACTIVE CYCLING PASSAGE ALONG RIVERSIDE (UNDERPASS)

RIVERSIDE WALK AND UNDERPASS/OUTDOORS EVENTS

POTENTIAL TO INCLUDE EXISTING STORAGE SPACES NORTH OF THE RIVER

YOUTH URBANISM*

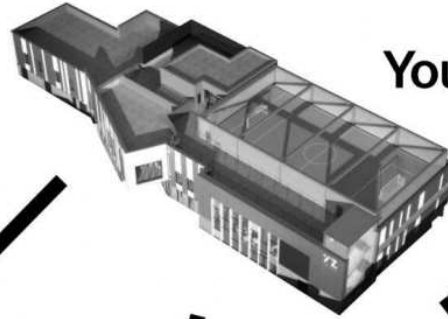
Def.: Urban design that seeks to prioritise, include and re-integrate marginalised youth and young people (15-24 yrs approx) within the civic structure including physical, social and cultural spaces. This is achieved through early engagement of youth and formation of guiding principles which sensitively integrate youth and young people with urban realm projects from conception through construction to operations, thus ensuring sustainable and youth oriented outcomes. Public design interventions include temporary structures, outdoors spaces and buildings by way of integrated neighbourhood design which seeks to improve urban life as experienced by young people, designing public realm facilities around basic and specific needs and demands, improving on as-found conditions and creating opportunities for positive inter-generational exchange and soft learning. (*NEUBAU)

'ORGANISED HUB'
FACILITIES, SUPPORT STAFF
MEMBERSHIP

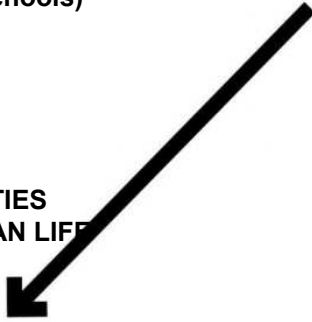
500+ (size of primary schools)

VS.

'YOUTH URBANISM'
INTRODUCE VAR FACILITIES
INTEGRATED WITH URBAN LIFE



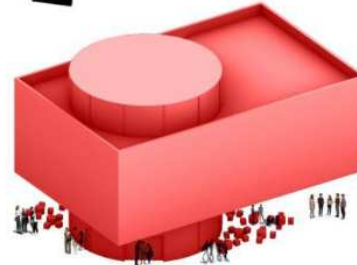
Youth Zone



Temporary Pavilion
CAPACITY 50+



Public Recreation Space
CAPACITY 30+



Centre
CAPACITY 300+

Active landscaping



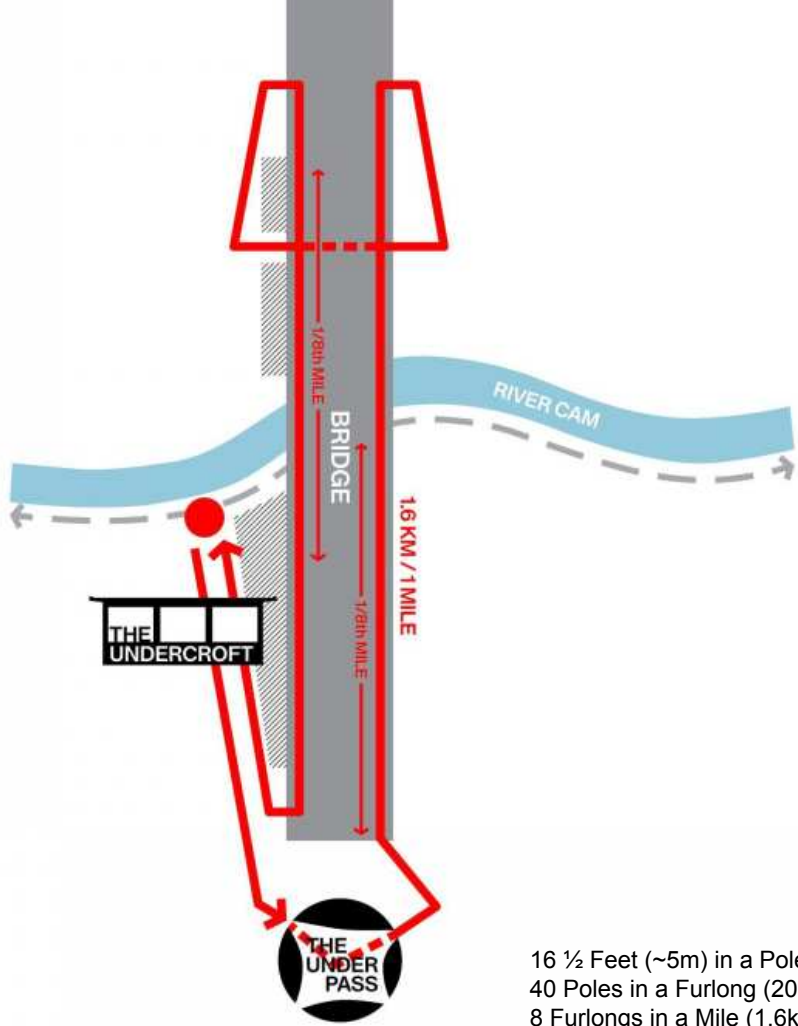
Image 1: Thermoplastic pavement marking, peas hill. Image 2: Jonathan Edwards commemoration mosaic, Ilfracombe Promenade. Pyne Ridd and Jonathon Rodney- Jones. Image 3: Active landscaping, Copenhagen

Why don't we know about Rowell and other 'town' athletes?

Can we move beyond celebrity and celebrate pedestrianism as an accessible art form?

Can an installation about pedestrianism be a gateway to explore a range of interdisciplinary questions?





16 ½ Feet (~5m) in a Pole
 40 Poles in a Furlong (200m)
 8 Furlongs in a Mile (1.6km)

