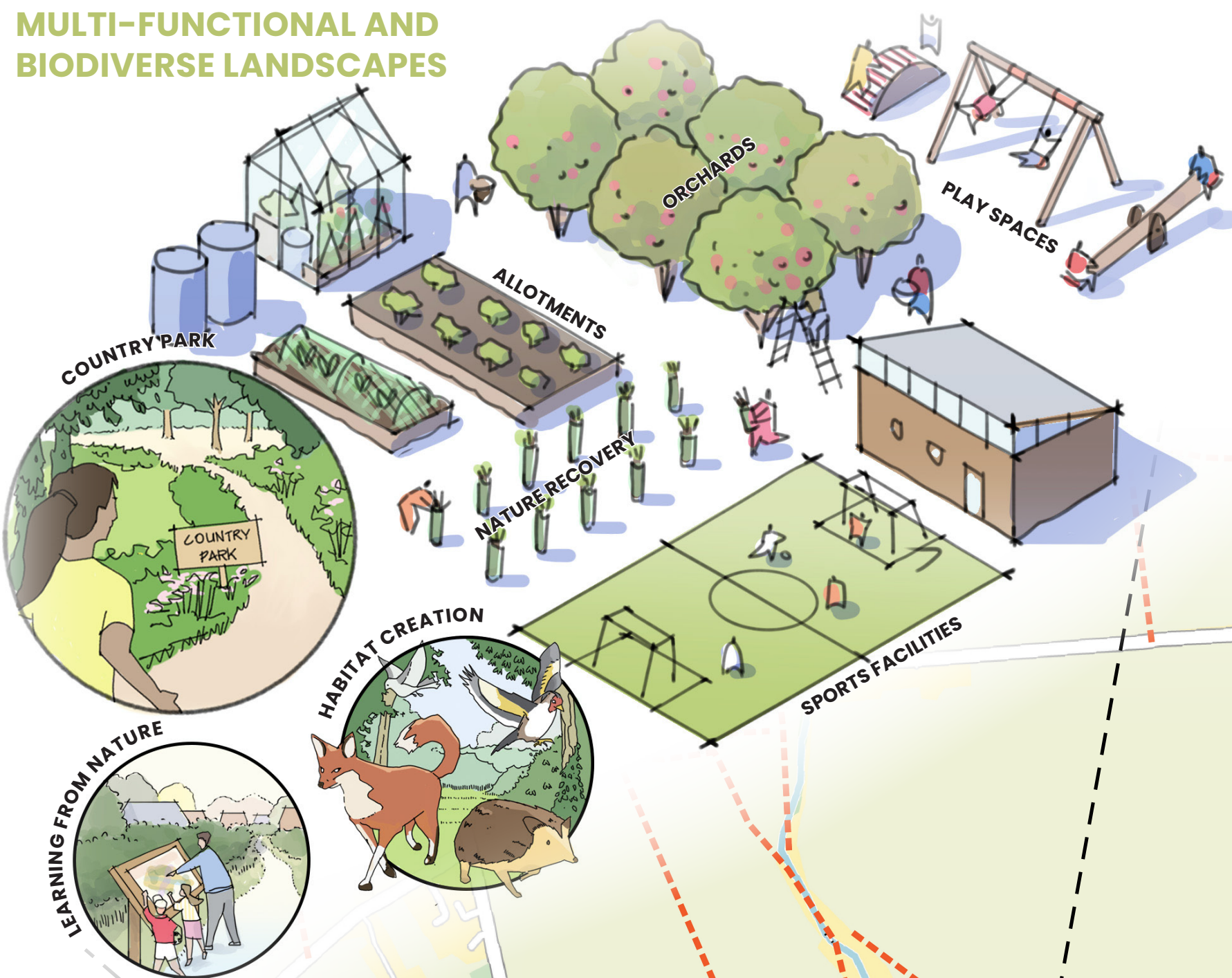


**MULTI-FUNCTIONAL AND
BIODIVERSE LANDSCAPES**

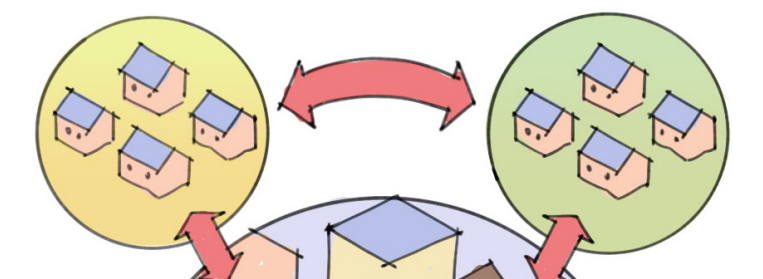


**ASHWELL AND MORDEN
GARDEN TOWN**

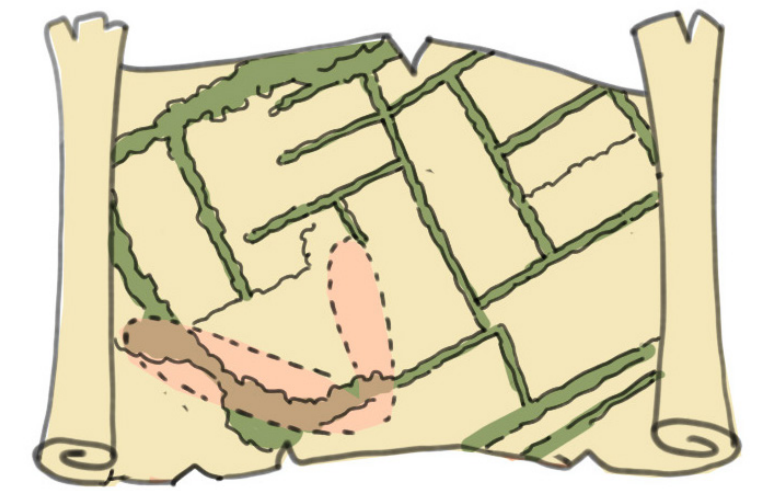


**LOCAL VILLAGE CENTRES: COMMUNITY
HEARTS THAT MEET DAY TO DAY NEEDS**

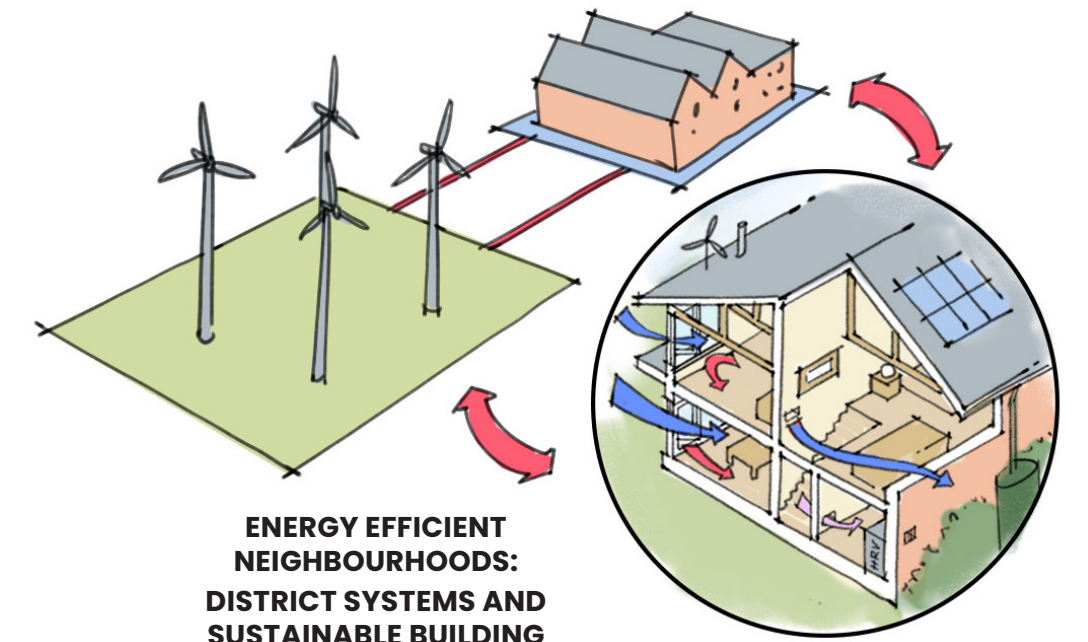
PLACE MAKING THEMES



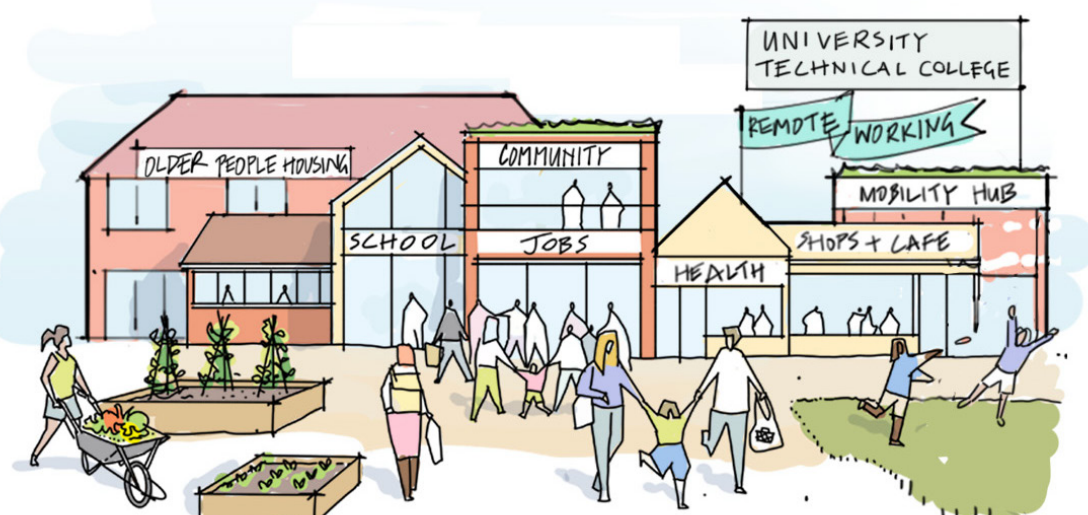
**HISTORIC NARRATIVE: A MARKET
TOWN AND VILLAGES COMBINE**



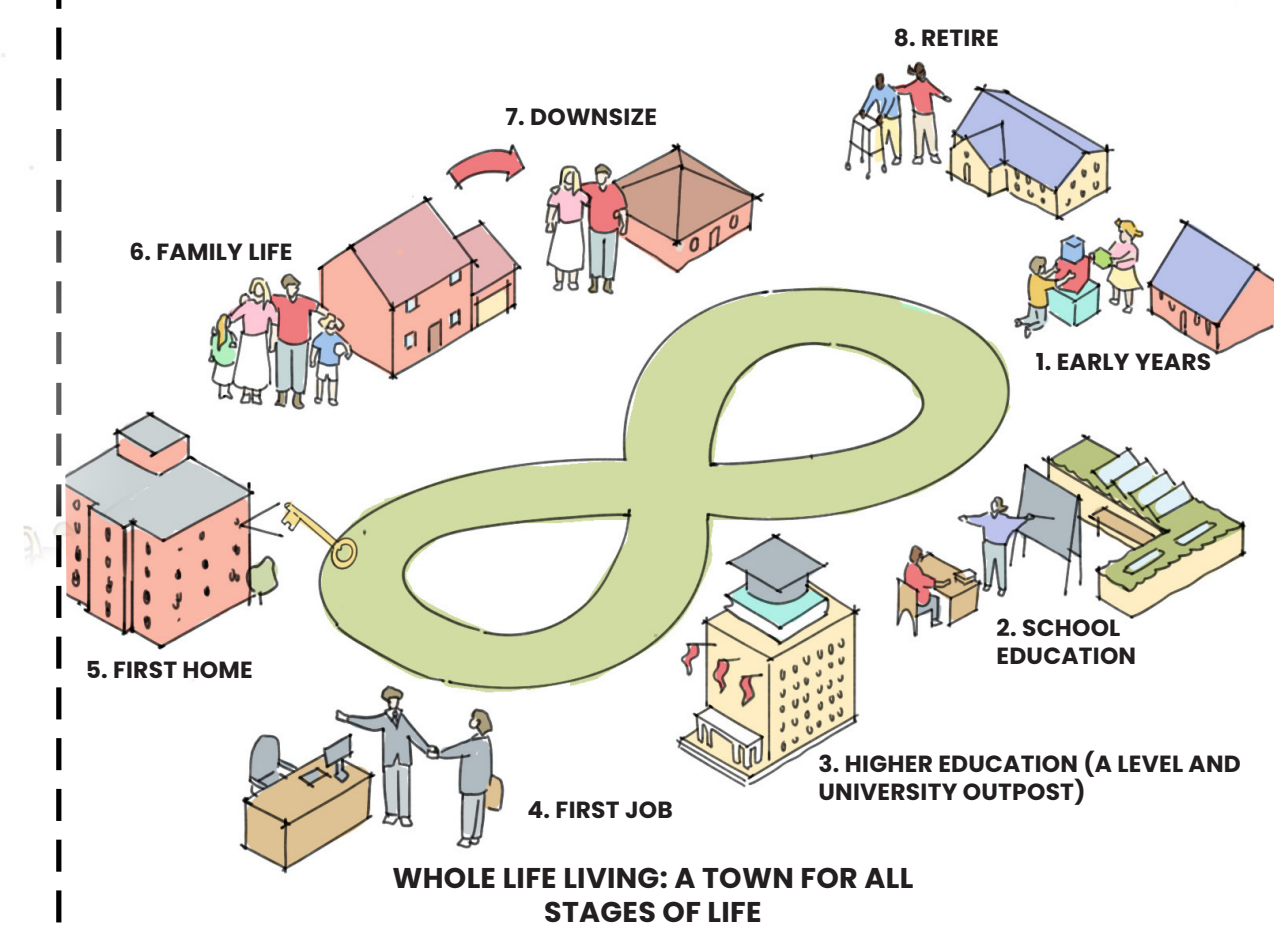
**RESPECTING LANDSCAPE PATTERNS:
RESPOND TO LANDFORM AND LANDSCAPE HERITAGE**



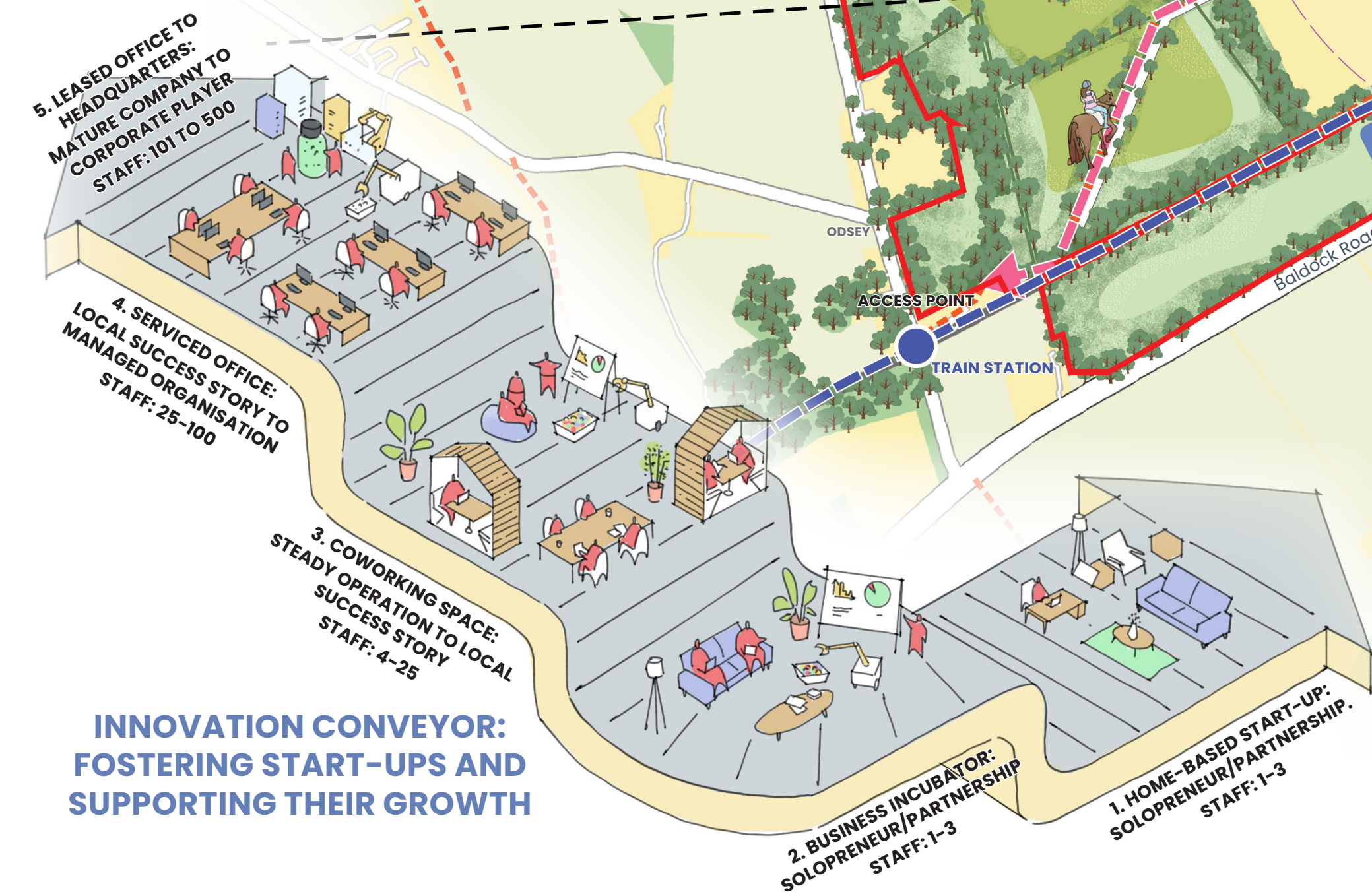
**ENERGY EFFICIENT
NEIGHBOURHOODS:
DISTRICT SYSTEMS AND
SUSTAINABLE BUILDING
TECHNOLOGY AND MATERIALS**



**FOSTERING AN INNOVATION ECO-SYSTEM BY
CREATING OPPORTUNITIES FOR COLLABORATION
OUTSIDE OF THE WORKPLACE**



**WHOLE LIFE LIVING: A TOWN FOR ALL
STAGES OF LIFE**



**INNOVATION CONVEYOR:
FOSTERING START-UPS AND
SUPPORTING THEIR GROWTH**

**A MARKET HIGH STREET
ANCHORED EACH END BY
A TRAIN STATION AND
SECONDARY SCHOOL.
INSPIRED BY LOCAL MARKET TOWN
SETTLEMENTS AND THE FIRST GENERATION
OF GARDEN VILLAGES**

