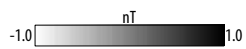


539750

54000

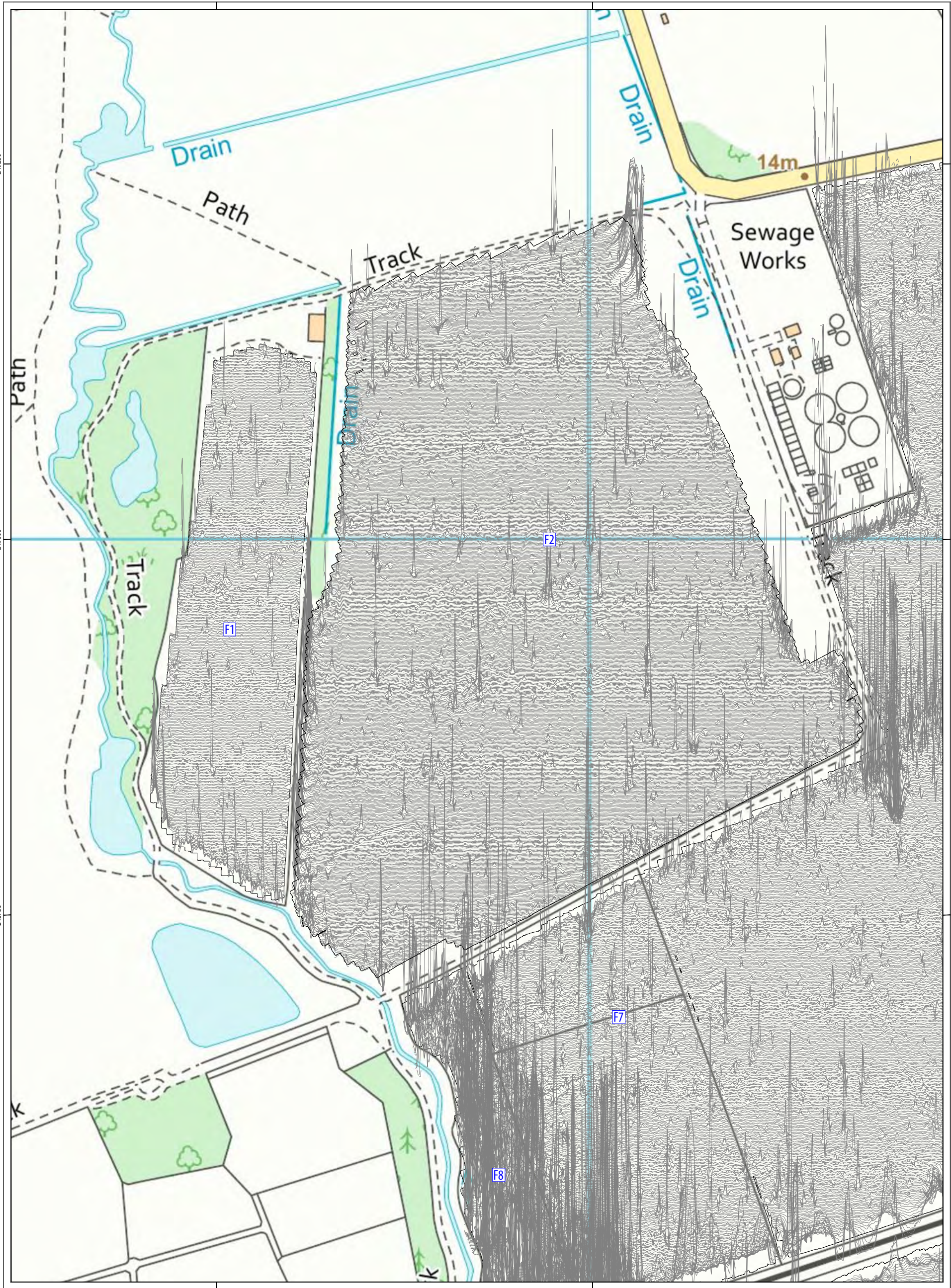


PROJECT SFFC19
Station Fields
Foxton
South Cambridgeshire
Axis Land Partnerships

CLIENT

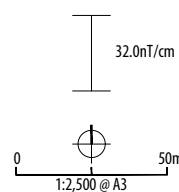


Headland Archaeology Yorkshire & North
Unit 16 | Hillside, Beeston Road | Leeds LS11 8ND
t 0113 387 6430
e yorkshireandnorth@headlandarchaeology.com
w www.headlandarchaeology.com



539750

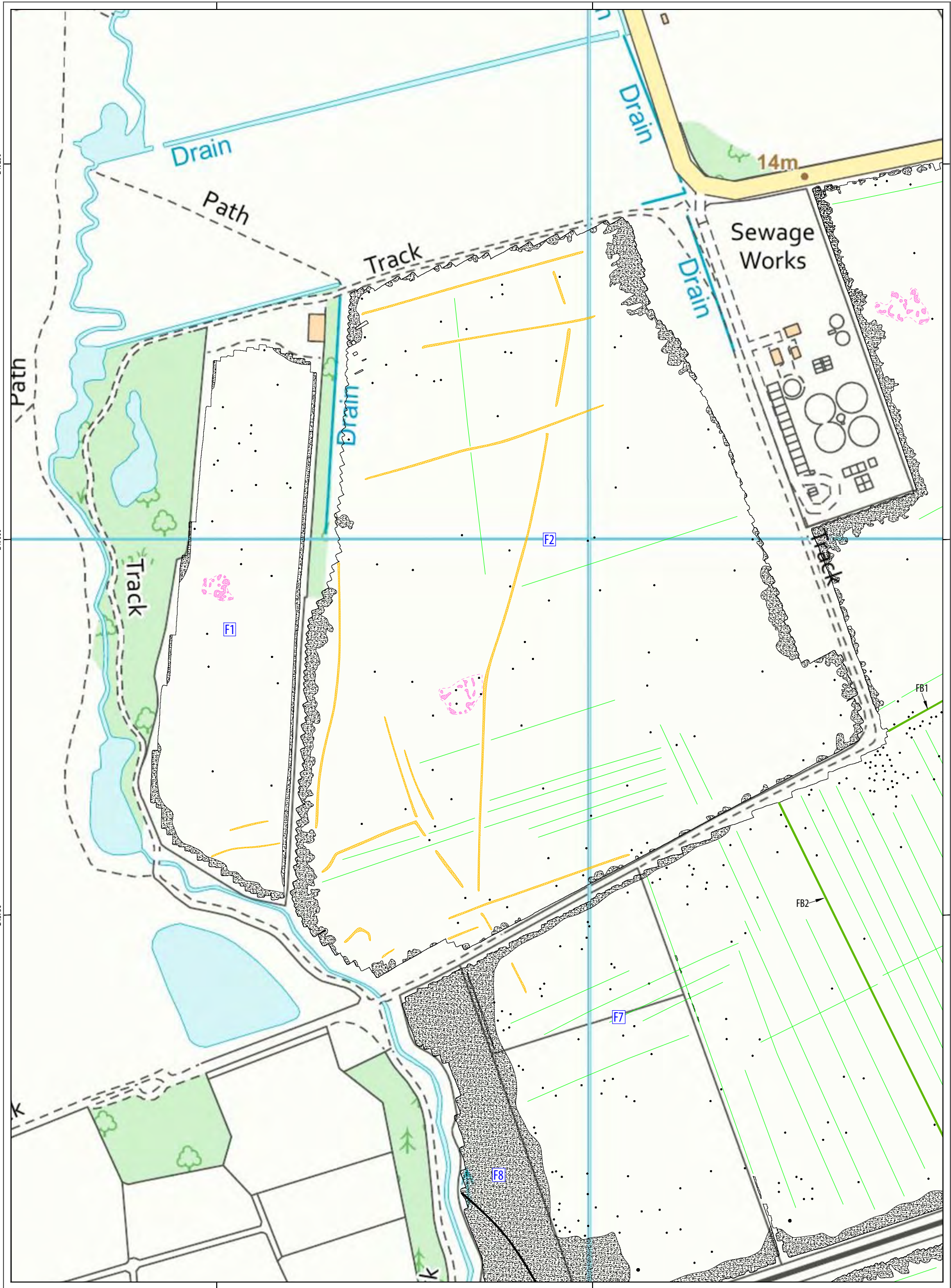
54000



PROJECT SFFC19
 Station Fields
 Foxton
 South Cambridgeshire
CLIENT Axis Land Partnerships

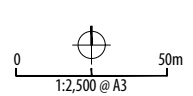
HEADLAND
ARCHAEOLOGY

Headland Archaeology Yorkshire & North
 Unit 16 | Hillside, Beeston Road | Leeds LS11 8ND
 t 0113 387 6430
 e yorkshireandnorth@headlandarchaeology.com
 w www.headlandarchaeology.com



TYPE OF ANOMALY	INTERPRETATION	TYPE OF ANOMALY	INTERPRETATION
● dipolar isolated	ferrous material	⊗ magnetic enhancement	archaeology?
● magnetic disturbance	ferrous material		
— dipolar linear	service pipe		
⊗ magnetic enhancement	quarrying		
— linear trend	agricultural		
— linear	former field boundary?		

ABBREVIATIONS	
FB	field boundary



PROJECT SF19
Station Fields
Foxton
South Cambridgeshire
Axis Land Partnerships

CLIENT

**HEADLAND
ARCHAEOLOGY**

Headland Archaeology Yorkshire & North
Unit 16 | Hillside, Beeston Road | Leeds LS11 8ND
t 0113 387 6430
e yorkshireandnorth@headlandarchaeology.com
www.headlandarchaeology.com

ILLUS 12 Interpretation of magnetometer data; Sector 1