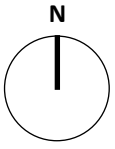


- Subject to:**
- Survey
 - Planning
 - Highways
 - Services
 - Tree Survey
 - Site Investigation



NOTES

Overall Area

Total Site Area = 11.652ha

Developable Areas

Total Development Area (approx.) = 5.37 ha

Approx. Number Dwellings = c.135

Open Space

Western Formal POS: 0.78 ha

Central Formal POS: 0.52 ha

Southern Open Space: 5.00 ha

Total POS = 6.3ha

(Total Required for Planning Policy = 1.06ha)

Affordable Housing

Policy Compliant

SKETCH SITE MASTERPLAN



Chaplin Farrant
 Architects, Engineers
 and Cost Consultants