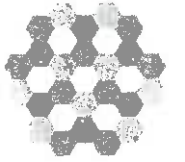
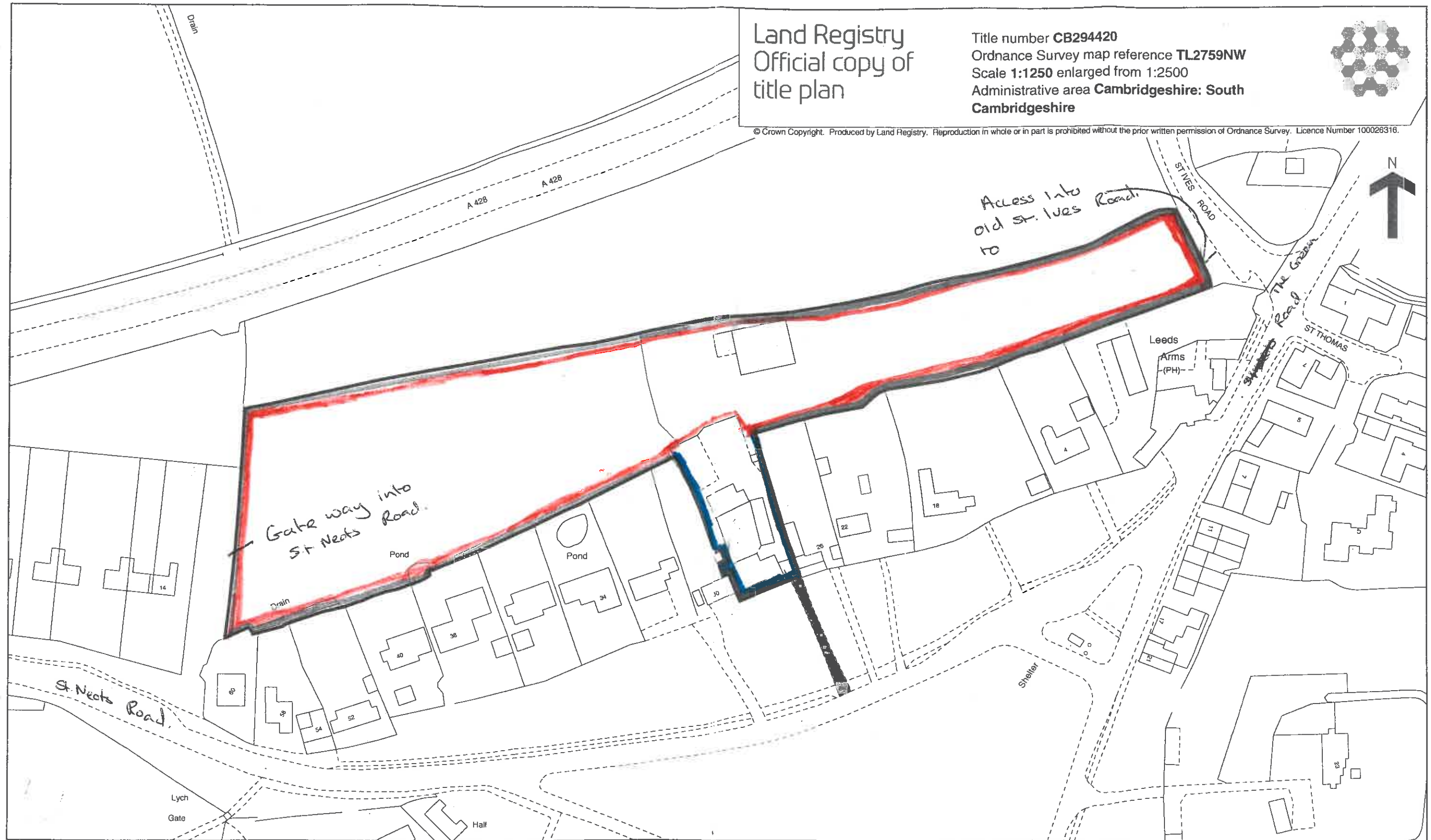


Land Registry  
Official copy of  
title plan

Title number **CB294420**  
Ordnance Survey map reference **TL2759NW**  
Scale **1:1250** enlarged from 1:2500  
Administrative area **Cambridgeshire: South  
Cambridgeshire**



© Crown Copyright. Produced by Land Registry. Reproduction in whole or in part is prohibited without the prior written permission of Ordnance Survey. Licence Number 100026316.



This official copy issued on 4 December 2008 shows the state of this title plan on 4 December 2008 at 09:13:59. It is admissible in evidence to the same extent as the original (s.67 Land Registration Act 2002).

This title plan shows the general position, not the exact line, of the boundaries. It may be subject to distortions in scale. Measurements scaled from this plan may not match measurements between the same points on the ground. See Land Registry Public Guide 19 - Title Plans and Boundaries.

This title is dealt with by Land Registry, Peterborough Office.

South Cambridgeshire  
Planning Services  
21 MAR 2019  
**RECEIVED**



1407006003