

Vision for sustainable micromobility in Cambridgeshire & Peterborough

Smart Travel & Delivery Consolidation Hubs

CAMBRIDGE
ELECTRIC
TRANSPORT

bizbikeTM

**A blueprint for cleaner,
inclusive, and connected
movement across our region.**

How?


**Create a county-wide network of smart, zero-emission
mobility and logistics hubs enabling cleaner air,
improved accessibility, and sustainable local jobs.**

The Challenge




**Quality of
life**

**Growing
congestion &
emissions**



**Rural
isolation**

**Limited rural
mobility and last-
mile solutions**



**Housing
increase**

**Plans for 150,000+
new homes**



**Parcel
delivery
volumes**

**Increased volume
of deliveries in
towns and cities**



**Under-
utilised
infrastructure**

**Under-use of
cycleway and
Greenways
infrastructure**



The opportunity

- Transform 100+ communities with zero-emission options
- Reduce costs, emissions, and congestion
- Enable equitable access across urban and rural areas
- Unlock new commercial models for logistics, delivery, and local enterprise

Strategic vision: A two-tier network

Tier 1:

Smart Travel Hubs

Solar-powered

Active travel focus

Inclusivity through wider
range of vehicles

e-bikes, cargo bikes,
quadricycles, adapted bikes

Tier 2:

Delivery Hubs

Reduce van & truck trips

Use vacant sites for zero-
emission last-mile logistics

e-cargo bikes, e-vans, delivery
pods, consolidation services

Combined

Operations:

Connecting and increasing
productivity for people,
businesses and communities
across Cambridgeshire

Combined operations > economies
of scale > reduced costs



Building on experience & vision



Smart technology & sustainability

**Off-grid solar &
battery power**

**Smart management
system & user app**

**Modular and circular
design & materials**

**Net-zero operations
from day one**

Maximising ROI on existing infrastructure

The Cambridgeshire Smart Travel & Delivery Hub network will deliver tangible, high-value returns on the county's £110m+ investment in the Greater Cambridge Greenways network, as well as other cycling infrastructure across Cambridgeshire & Peterborough.

Wherever possible, Delivery Consolidation Hubs will be based in existing unused county buildings rather than requiring new structures.



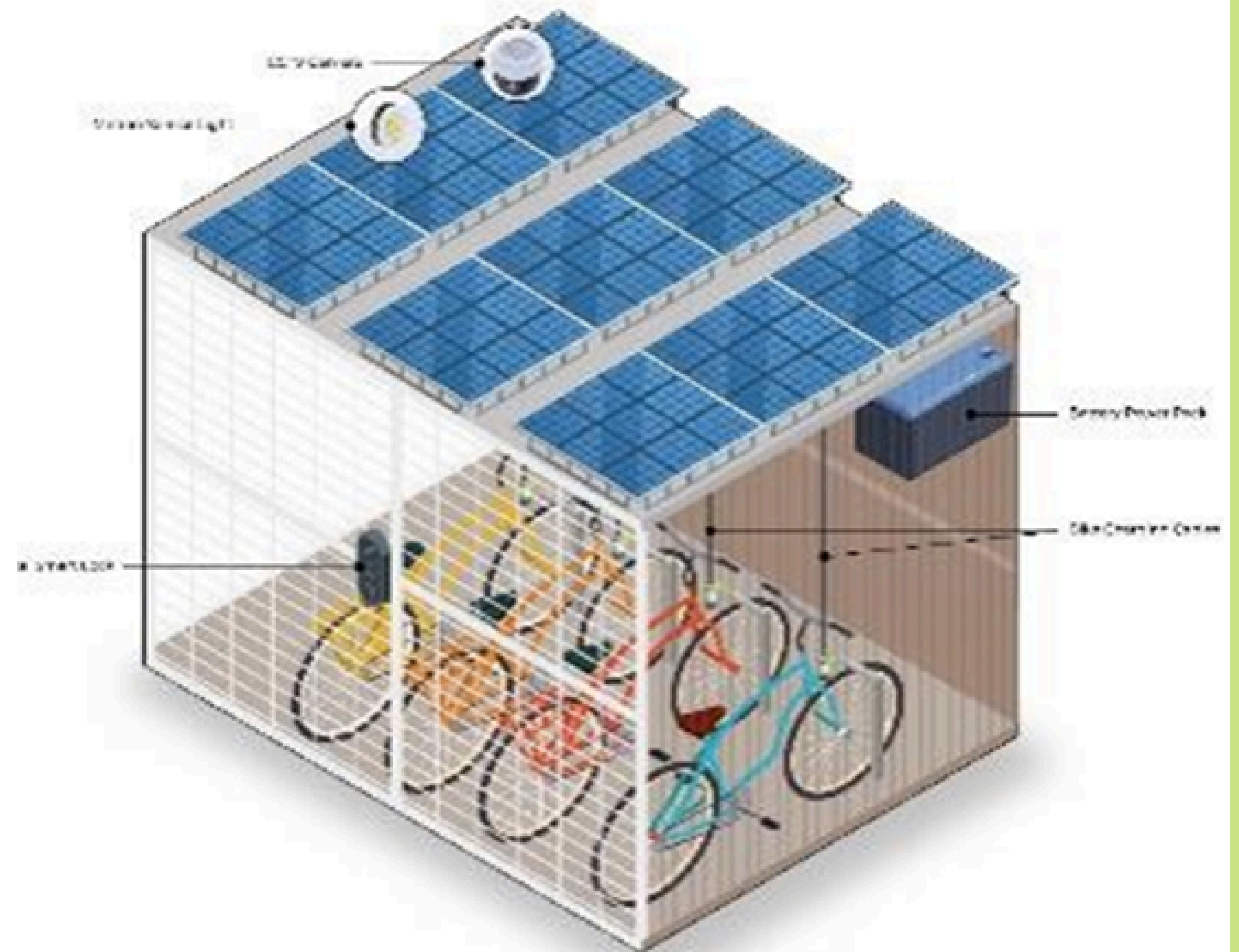
The Pilot Project

- Funded by CPCA Business Growth & Social Impact Investment Fund
- Develop and test prototype Travel Hub
- Integrate solar, battery, lighting, e-bike docking

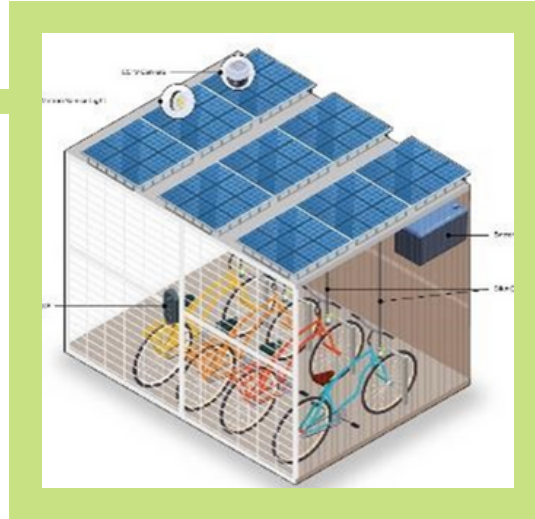
Funded by



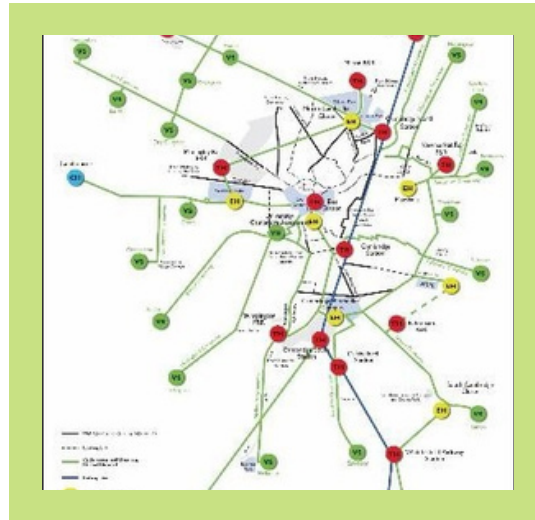
**CAMBRIDGESHIRE
& PETERBOROUGH**
COMBINED AUTHORITY



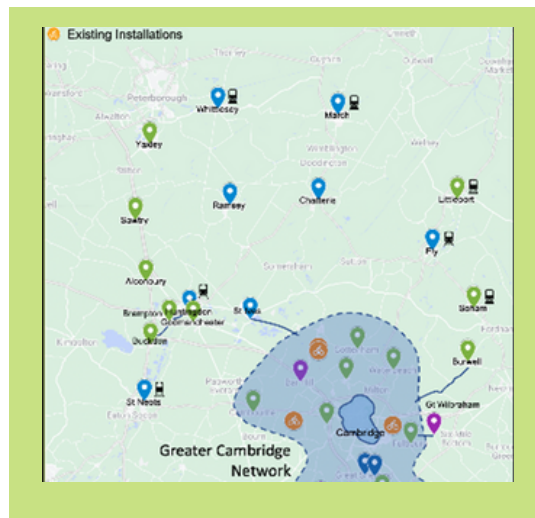
Deployment plan*



PHASE 1: Pilot project



PHASE 2: Three Delivery Hubs & 10 Travel Hubs in Greater Cambridge

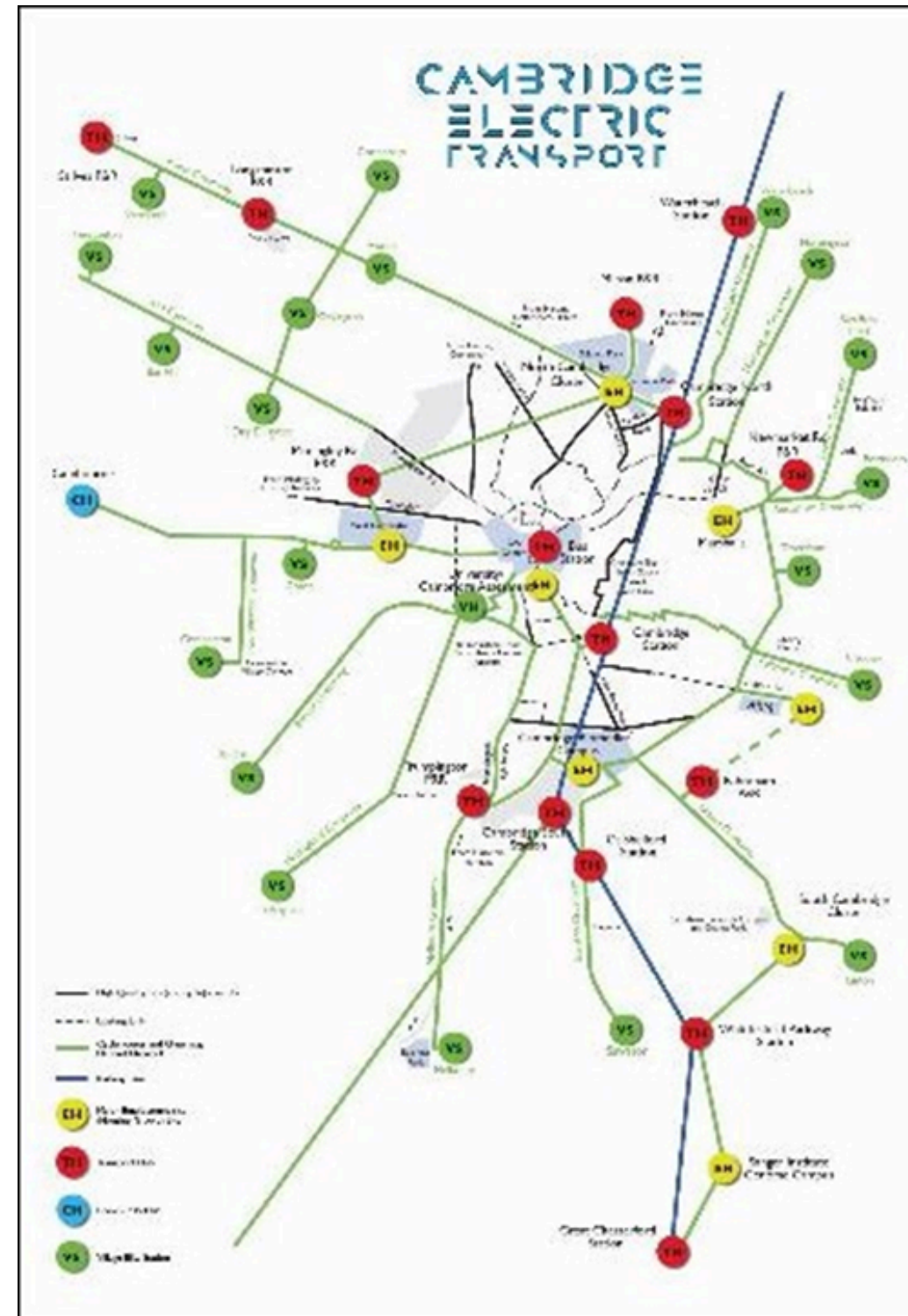


PHASE 3: County-wide rollout (150+ hubs)

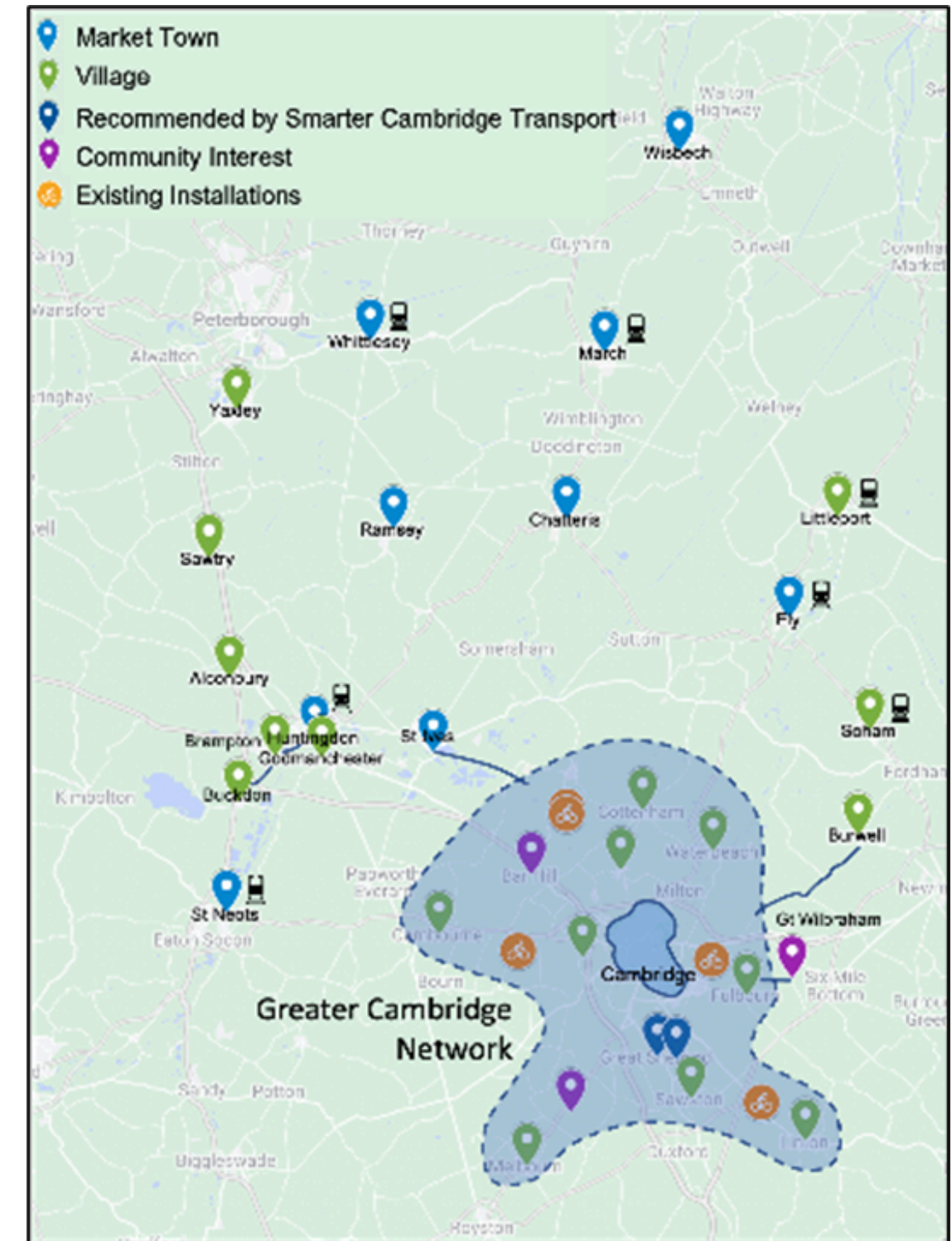
* Subject to consultations with local communities & authorities

Prospective Hub Locations

Peterborough network to be added

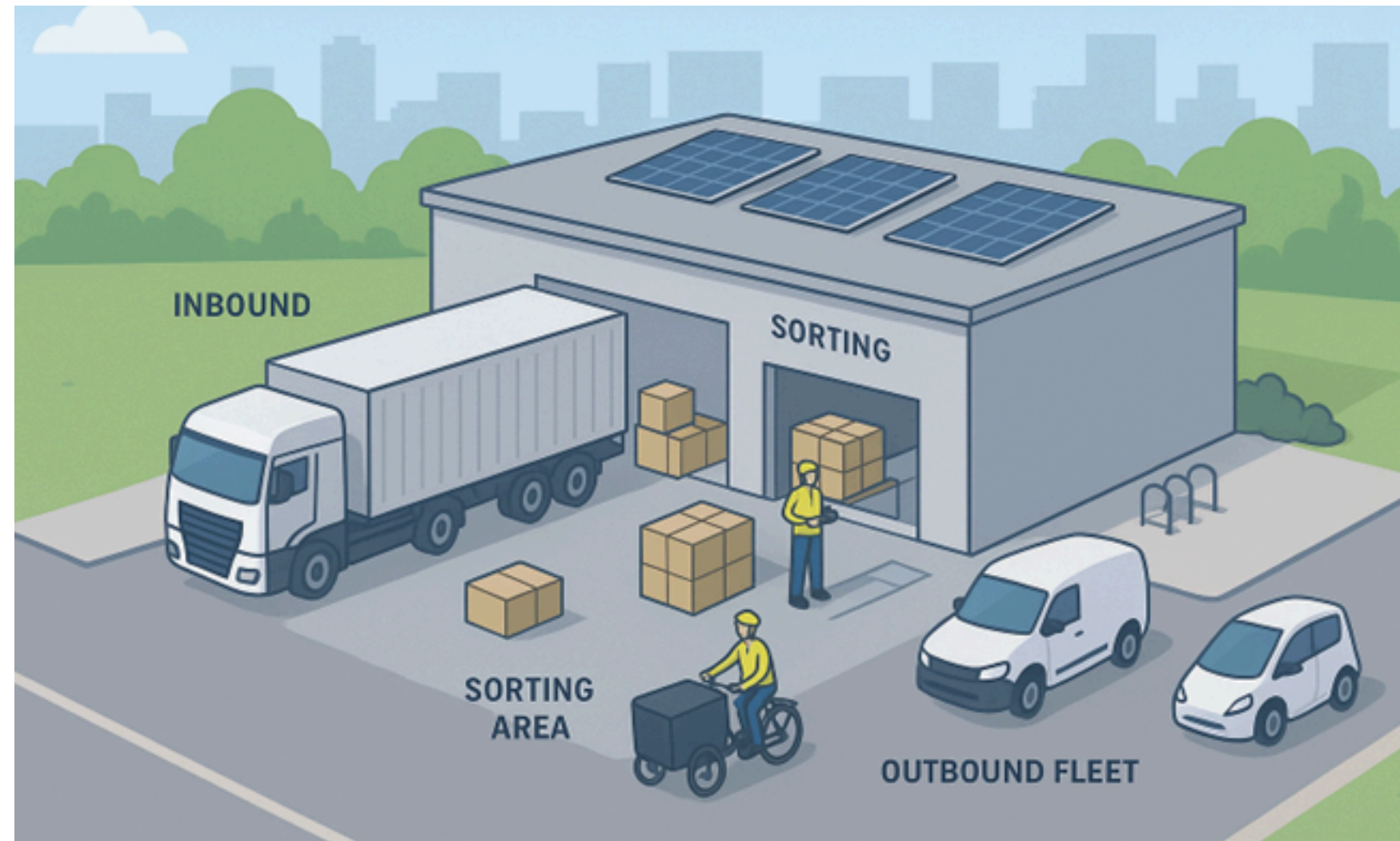


Greater Cambridge Hub Network



County Hub Network

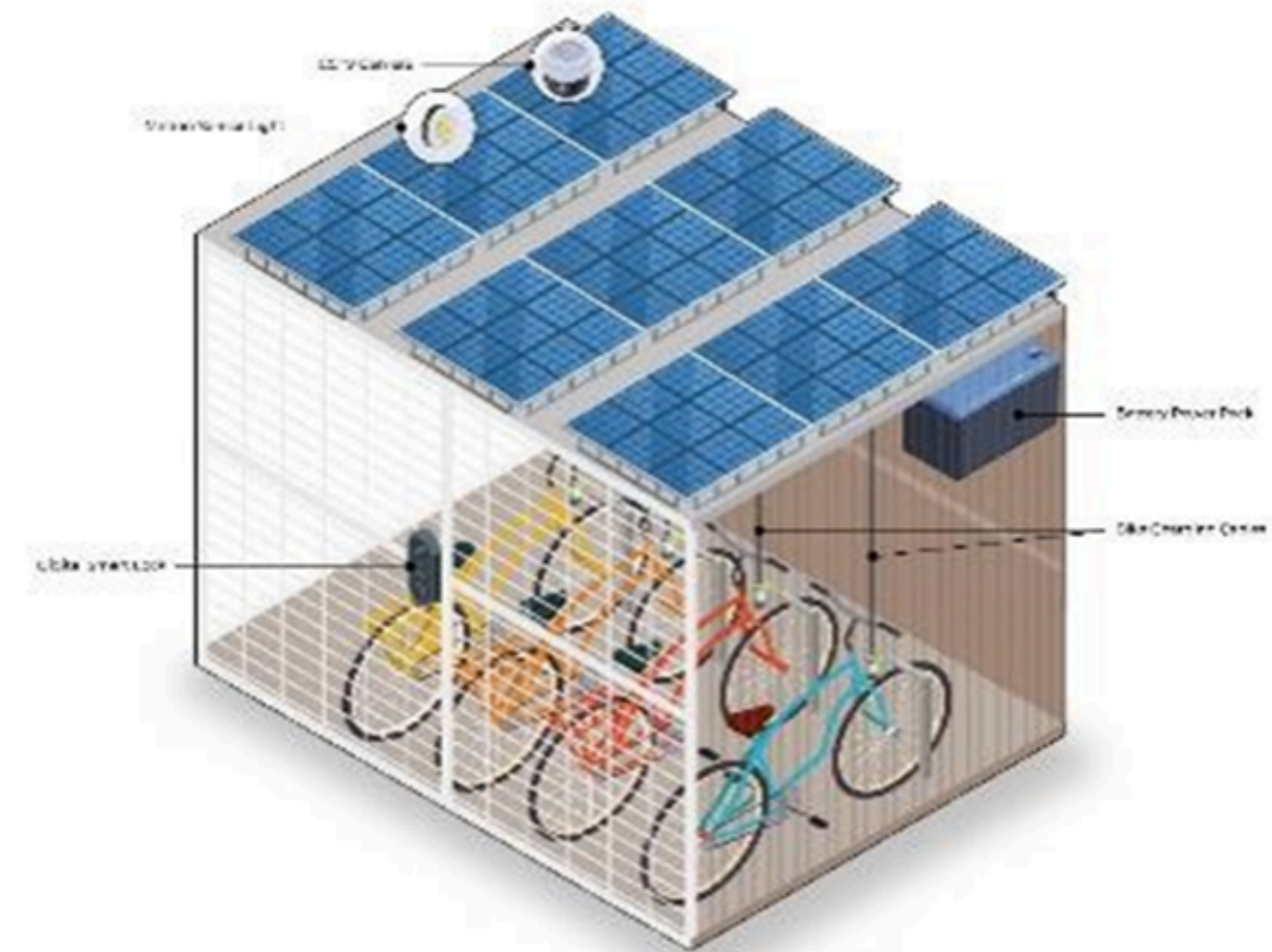
Delivery Hub



Services & facilities include:

- Inbound delivery, consolidation, sorting
- Outbound dispatch & last-mile delivery
- Reverse logistics/returns handling
- Partner fleet storage, maintenance, repairs, charging
- Rider rest & kitchen area

Smart Travel Hub



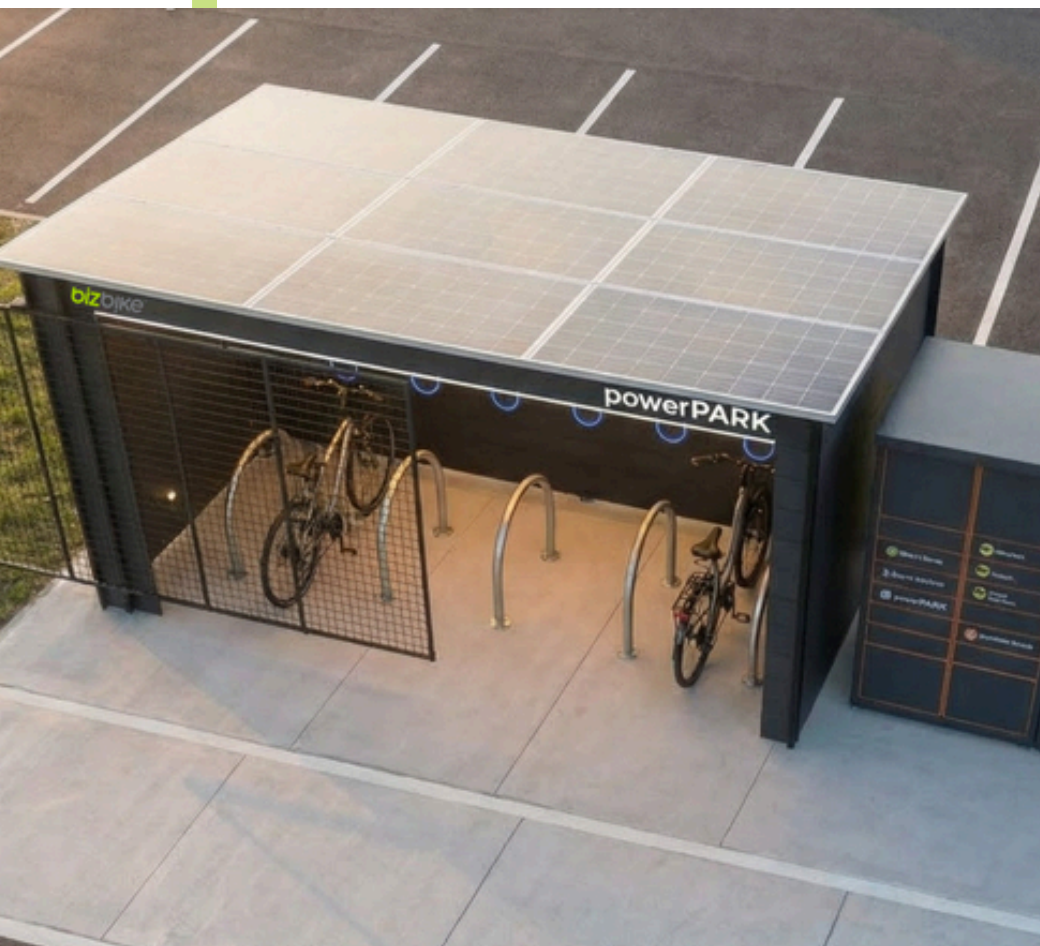
Services & facilities include:

- Range of active travel vehicles to rent (e-bikes, cargo bikes, mobility scooters)
- High level of security & lighting
- Clear waymarking and location maps
- Bike & device charging ports
- Public bike repair station
- Easy access for tourists

Smart Travel Hub Design

Technology Partner

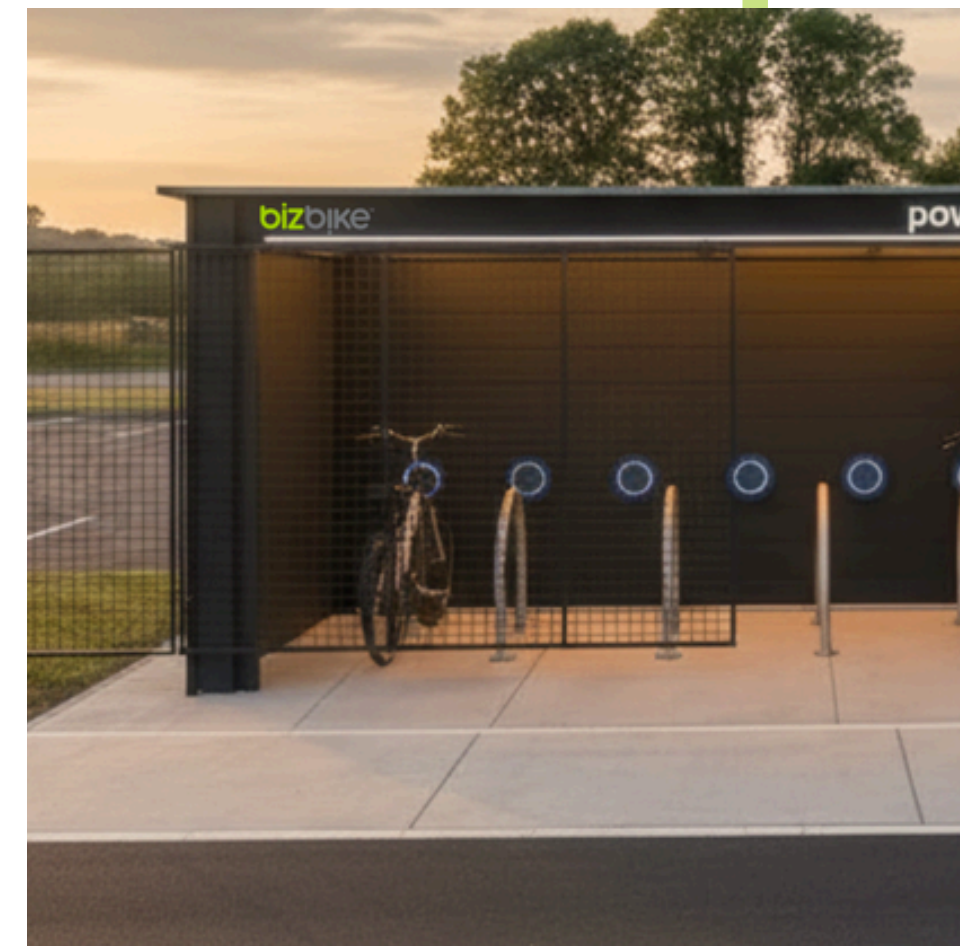
The logo for 'intelligen' features a red power button icon above the letter 'i'. The word 'intelligen' is written in a bold, sans-serif font, with 'intelli' in black and 'gen' in red.



Solar-powered



Smart Travel Hub, with parcel lockers



E-bike charging

Funding

Development costs

- Grants - local & central government
- Equity investment
- Corporate sponsorship
- Loan finance
- Lease finance

Running costs

- Corporate Hub subscriptions
- Rider subscriptions & fees
- Corporate staff subscriptions
- Housing developer subscriptions

Next steps

1. Complete pilot
2. Partner finalisation
3. Secure funding
4. Site selection & detailed deployment plan
5. Greater Cambridge deployment
6. County deployment

Partnership - The key to success

Strategic Partners



Commercial Partners

