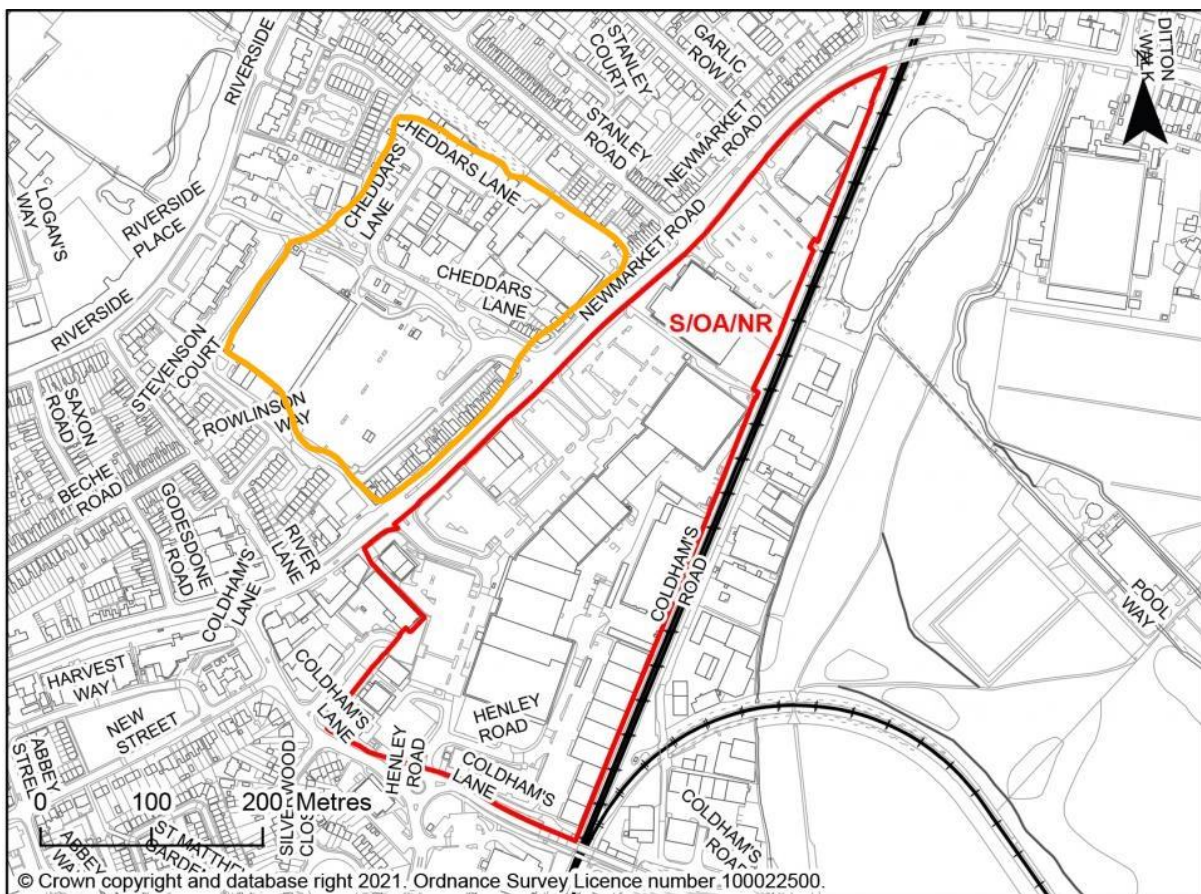


**Greater Cambridge Local Plan – First Proposals**  
**Response to Policy S/OA: Opportunity Areas in Cambridge**

Suggested addition to S/OA/NR



We also request that you include an adjacent area as part of these two New Opportunity Areas and this is marked in orange on the diagram above.

There are two reasons for requesting for this inclusion:

1. It is a similar land use to the other two areas and in the same location and therefore the same principles apply.
2. We have seen a number of planning applications coming forward in this area. These are being dealt with on a piecemeal basis with all the associated problems of piecemeal development. This is not an area of high quality design and is negatively impacted by Newmarket Road. A strategic planning approach is required to ensure that any planning applications contribute towards improving public realm and the overall improvement of the area.